



Town of
Tusten
an Upper Delaware River Community

WELCOME

Natural Resource Inventory, Open Space and Recreation Plan

OPEN HOUSE

August 1, 2024 7:00 – 8:30 PM



Overview



About the Project

The Town of Tusten has undertaken an effort to develop a Town-wide Natural Resources Inventory (NRI), Open Space and Recreation Plan. The NRI will identify key environmental and open space resources within the Town including wetlands, wildlife habitats, flood zones, forests and more. The Open Space and Recreation Plan will build upon the NRI and establish a vision for a Town-wide network of open spaces.

This project is being led by the Town of Tusten and guided by the Town's Conservation Advisory Council. The planning process will be facilitated by Town staff with technical assistance from MJ Engineering and Land Surveying, P.C.

This project is funded, in part, through a grant from the National Fish and Wildlife Foundation Delaware Watershed Conservation Fund 2023 and the Upper Delaware Council.

Conservation Advisory Council

The Natural Resources Inventory and Open Space & Recreation Plan will be guided by the **Conservation Advisory Council**:

- Jane Luchinger (Chair) - Tusten Deputy Supervisor
- Cathleen Breen
- Alexandra Climent
- Bernie Lohman
- Donovan Sylvest

The planning process will be facilitated by Town staff with technical assistance from MJ Engineering and Land Surveying, P.C.

Additional Project Partners

Peter Manning (Genius Loci) will serve as the project liaison and will be responsible for aiding project facilitation and communication among project partners.

Additional support and technical assistance will be provided by Sullivan County Planning and Real Property Services Departments and the Delaware Highlands Conservancy.

Did you know?

The Town of Tusten boasts nearly 14 miles of Delaware River shoreline, containing significant habitats for birds, fish and wildlife. The Delaware River is designated by the National Parks Service as a Scenic and Recreational River and is managed through State and Federal partnerships by the Upper Delaware Council.





What is a Natural Resources Inventory?

As part of this effort, the Town will undertake a Natural Resources Inventory (NRI) to identify environmental resources and constraints within the Town. This includes water resources, wildlife habitats, flood zones, forests and more. The NRI will update the 2011 Natural Resources and Open Space Inventory.

The “Why?”

This update will expand on the 2011 inventory to include more recent data as well as addition resources recommended by the New York State Department of Environmental Conservation such as geology, soils, watershed boundaries, etc.

The NRI can be used to inform the community of what resources exist within the Town and why they are important. The NRI will also be used as a resource for the Town Board and Planning board. Finally, the identification of these key features will also help to inform the Open Space & Recreation Plan.

What is an Open Space and Recreation Plan?

An Open Space and Recreation Plan establishes a vision for a Town-wide network of open spaces. The plan will create a roadmap to ensure an appropriate balance of open space, public access, natural resources and public recreational opportunities. The plan will also enable the Town to identify priorities for open space protection.

The “Why?”

The development of the Open Space and Recreation Plan furthers two key goals of the 2021 Comprehensive Plan:

"Balance protection of the Town's water quality, open spaces, and animal and plant habitats with encouraging economic activities that help conserve the Town's scenic and rural character."

"Work to create new opportunities for public access to lands and waters to increase recreational and educational options for residents and visitors."

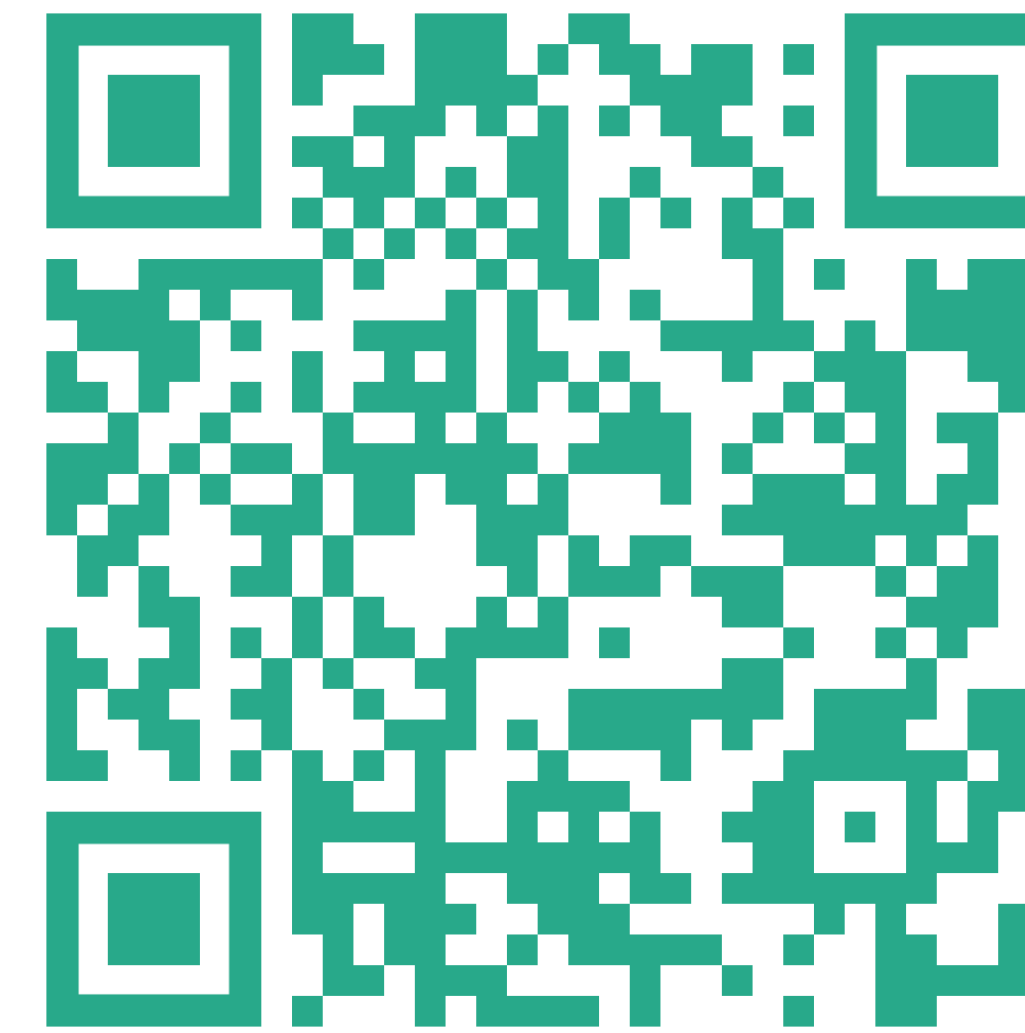
This work will set the stage for future implementation of conservation projects and new recreational opportunities. Through active public involvement, this process will create community consensus on recreation and conservation priorities as well as appropriate methods (such as regulations, voluntary incentives, and perhaps public funding) for completing such projects.



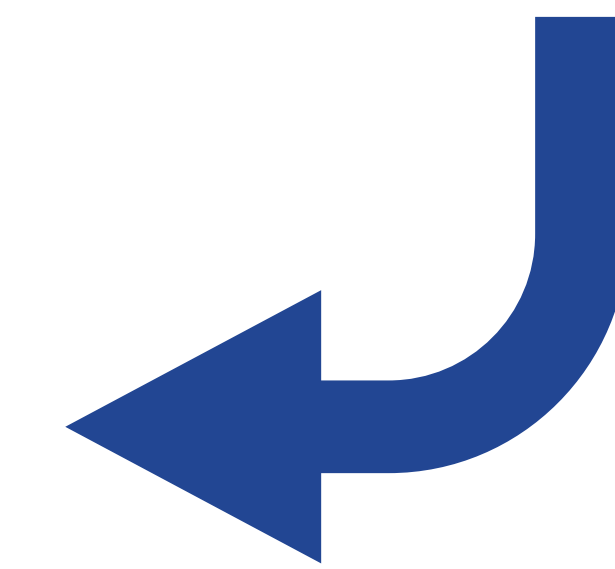
Opportunities for Public Engagement

Active community involvement is critical to the planning process! Three public meetings will be held through the duration of the project as well as stakeholder meetings and a Community Visioning Survey. A Public Engagement Plan was developed which details the anticipated engagement activities for the project. Read the Public Engagement Plan on the project website at www.TustenOpenSpaceRecreation.com

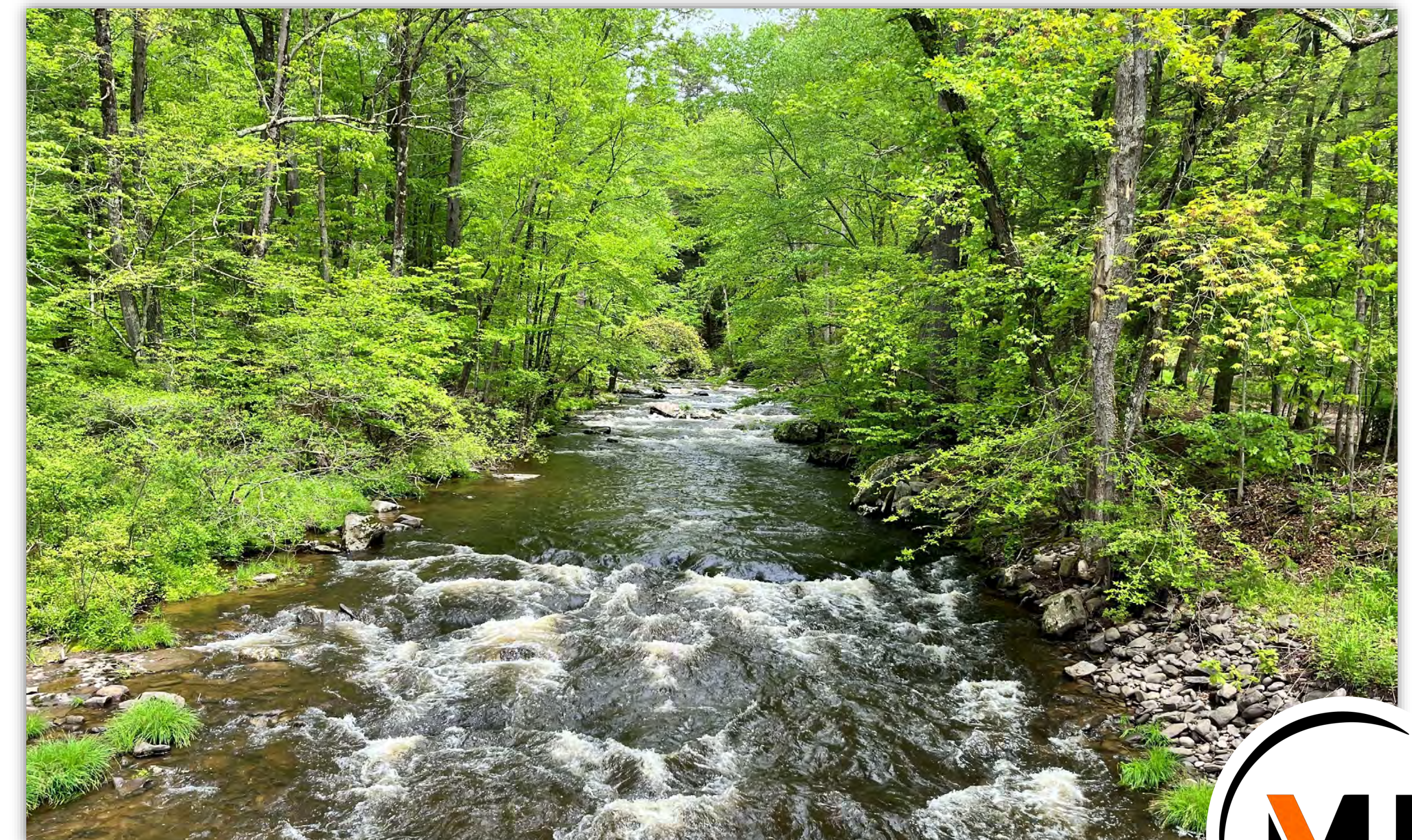
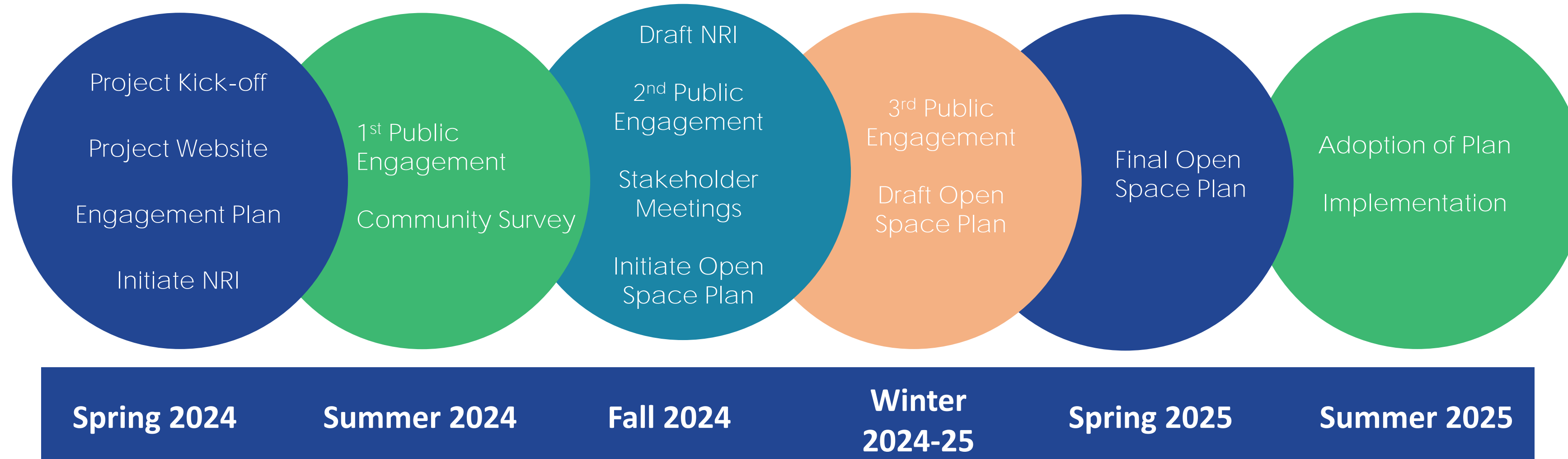
Want to stay in the know? Sign up to receive emails about upcoming public engagement through the contact page on project website or by scanning the QR Code!



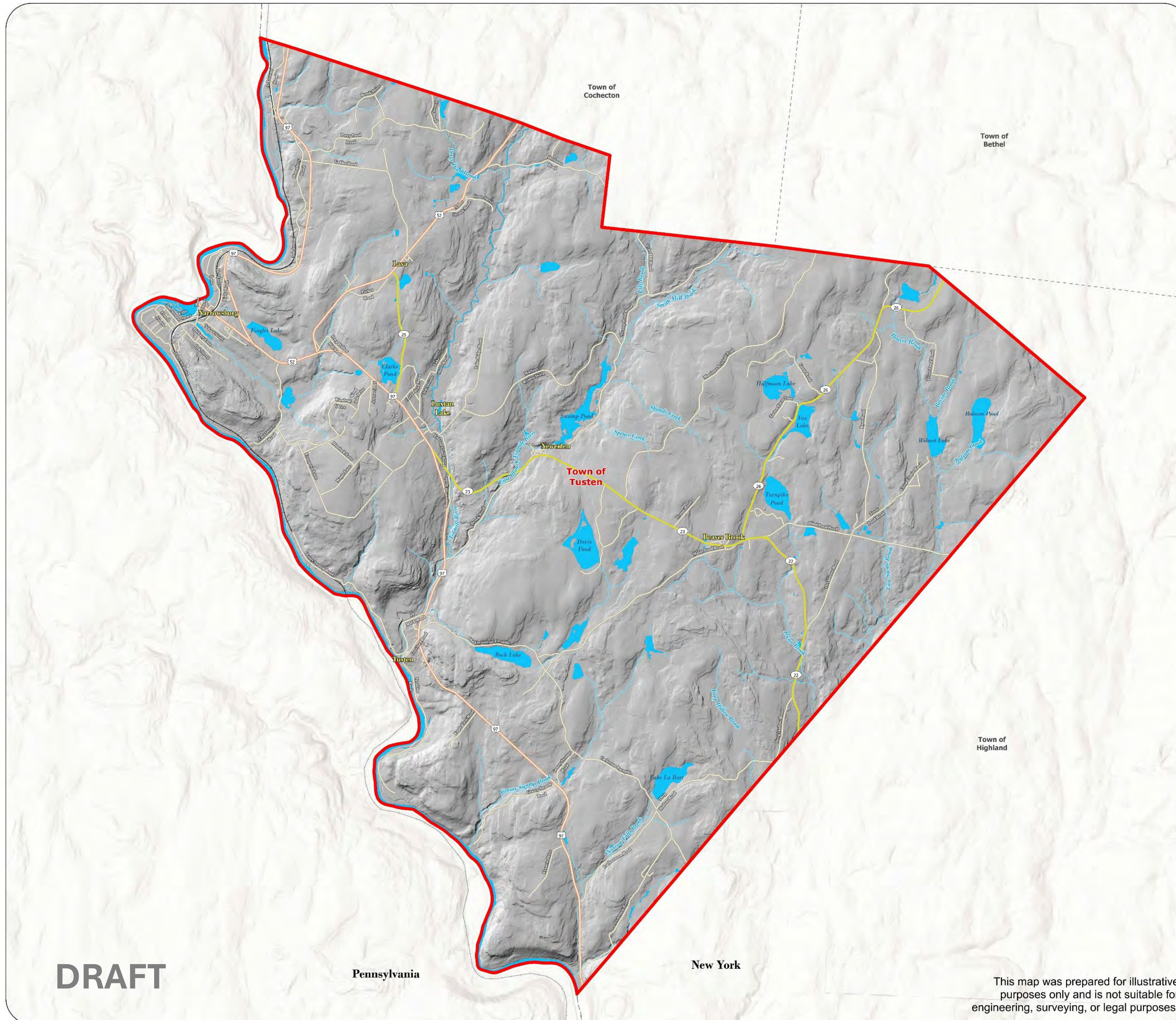
Scan me with your mobile device to sign up to receive updates!



Anticipated Project Schedule



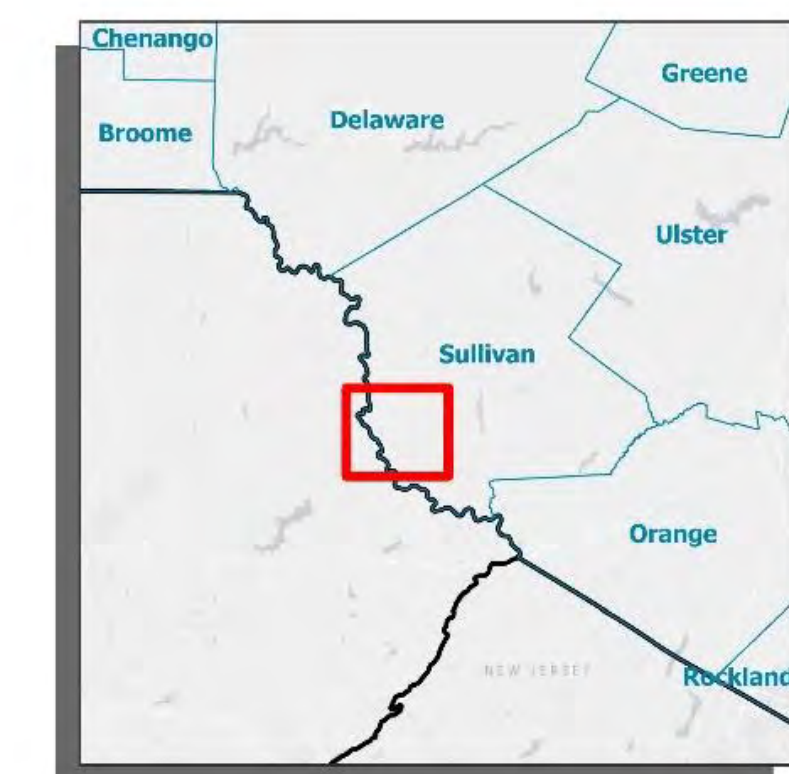
Natural Resource Mapping



Base Map

LEGEND

- Town of Tusten
- Town Boundary
- County Boundary
- State Routes
- County Routes
- Local Roads
- Railroad
- Waterbody
- River / Stream



DRAFT

Pennsylvania

New York

This map was prepared for illustrative purposes only and is not suitable for engineering, surveying, or legal purposes.



Sources:
Esri, NYS ITS, DEC, NPS
Sullivan County, Town of Tusten

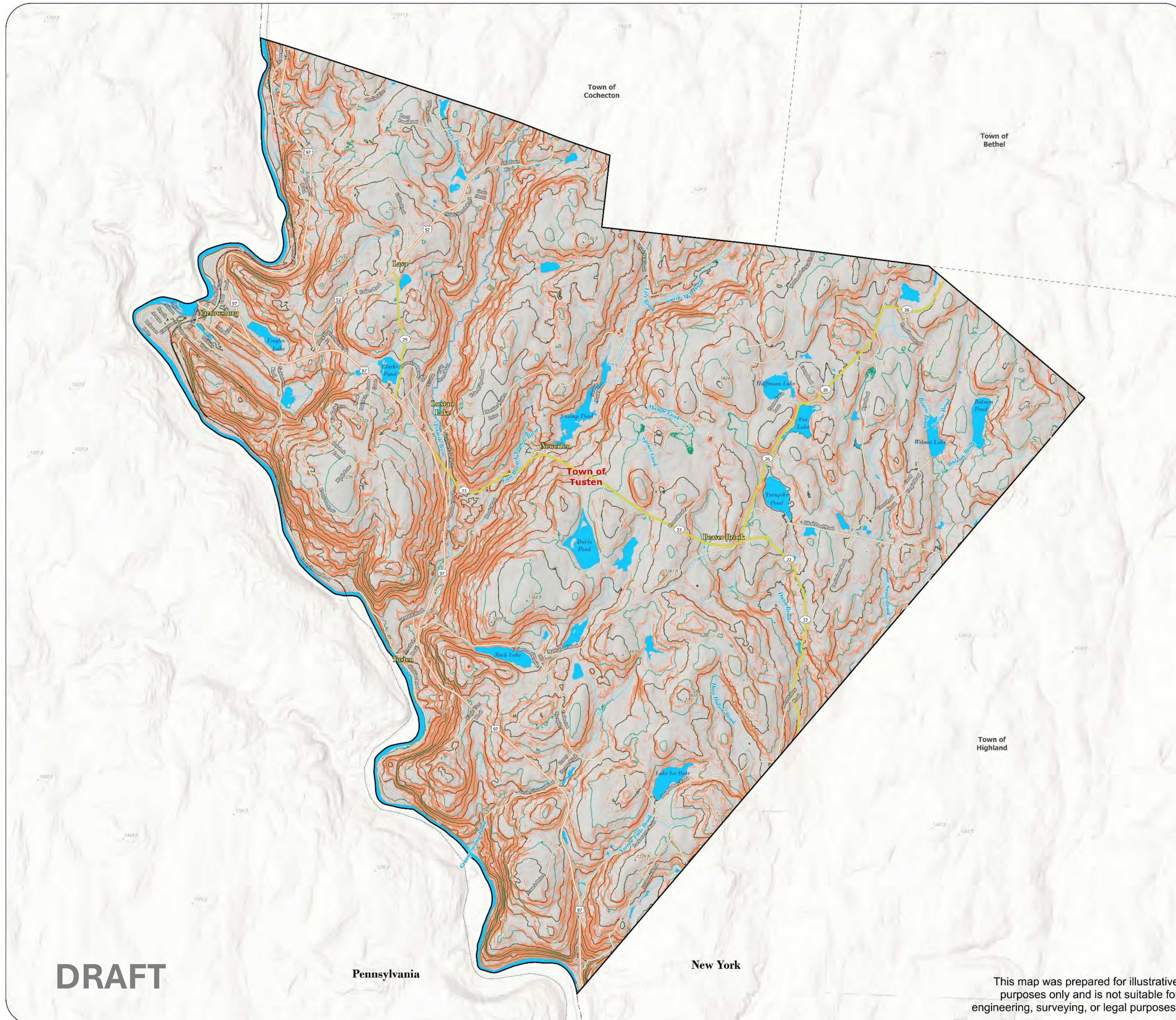
0 0.5 1
Miles



Natural Resource Mapping



Town of
Tusten
an Upper Delaware River Community

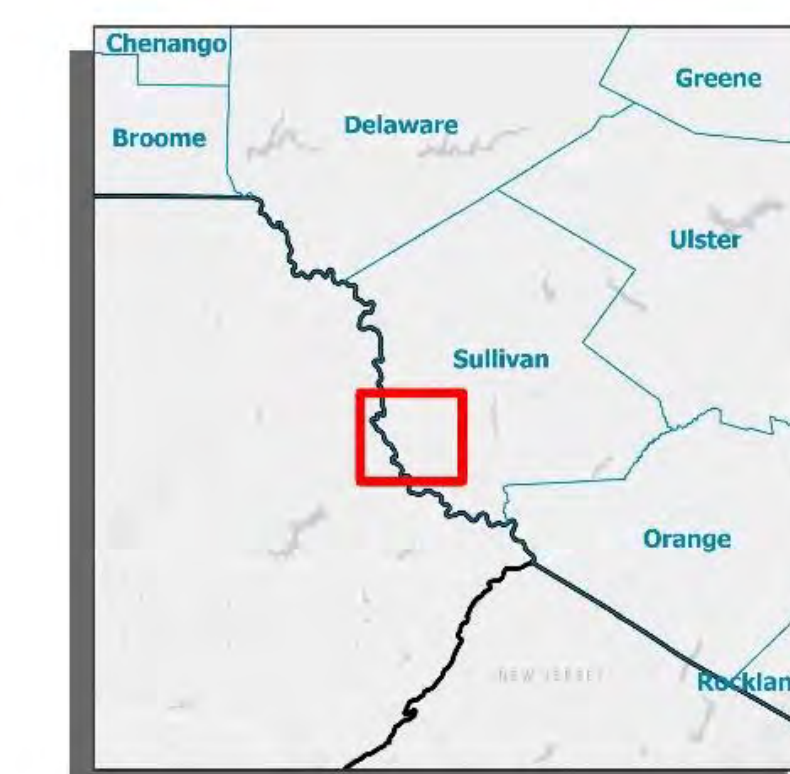


Topography & Steep Slopes

LEGEND

- Town of Tusten
- Town Boundary
- County Boundary
- State Routes
- County Routes
- Local Roads
- Railroad
- River / Stream
- Waterbody
- Slopes > 15%
- Contours**
- 100 ft Interval
- 50 ft Interval

Steep Slopes	Land Area (Acres)	Land Area (%)
Slopes > 15%	8720	27.5%



DRAFT

Pennsylvania

New York

This map was prepared for illustrative purposes only and is not suitable for engineering, surveying, or legal purposes.



Sources:
Esri, NYS ITS, DEC, NPS
Sullivan County, Town of Tusten

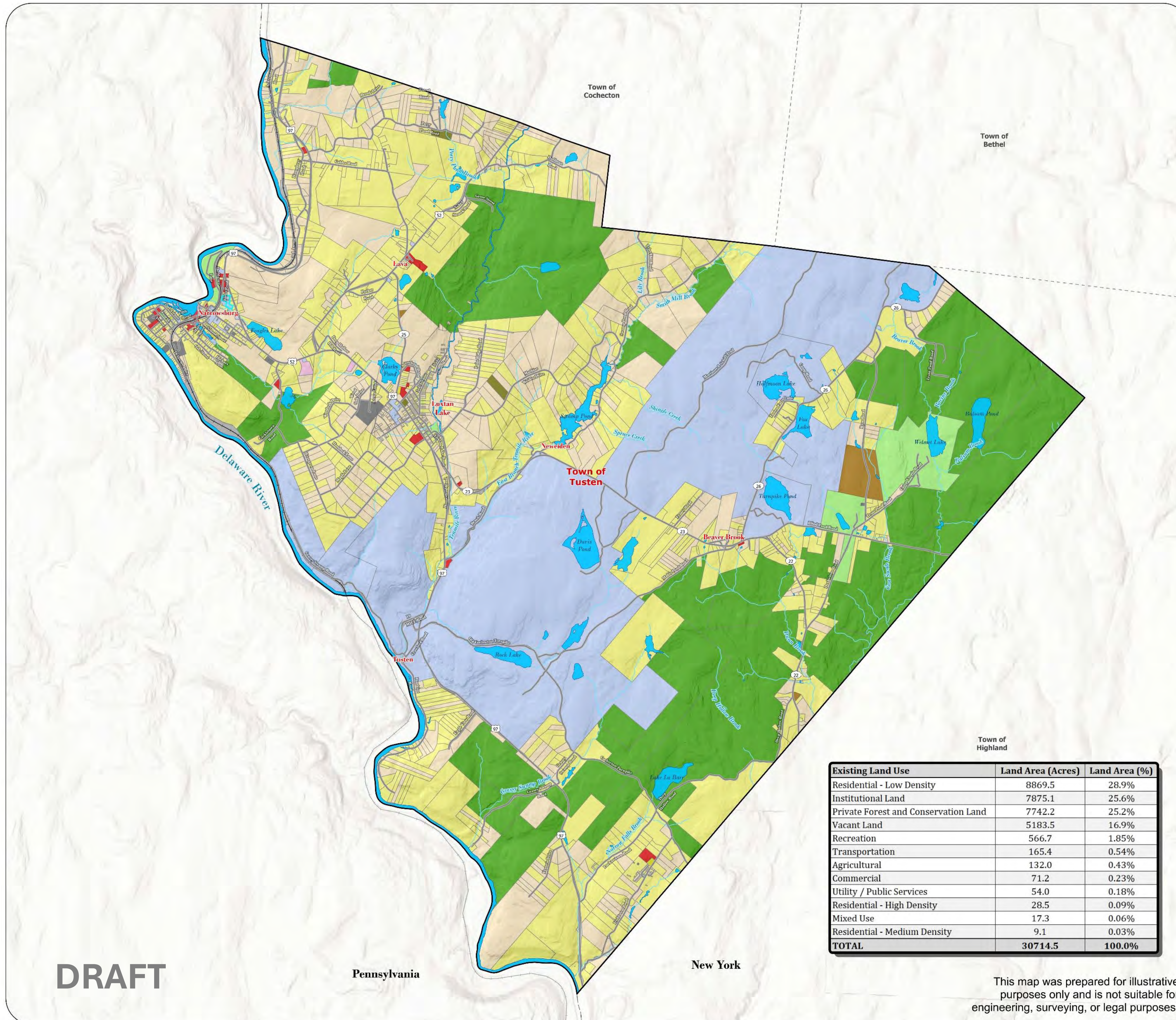
0 0.5 1
Miles



Natural Resource Mapping



Town of **Tusten**
an Upper Delaware River Community

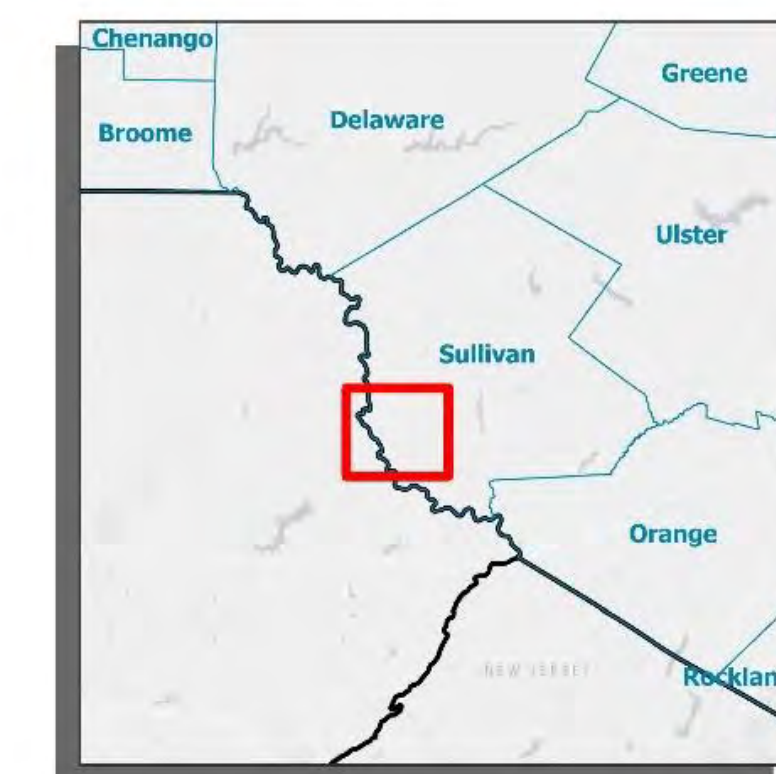


Existing Land Use

LEGEND

- Town of Tusten
- Town Boundary
- County Boundary
- Roads
- Railroad
- Waterbody
- River / Stream
- Existing Land Use**
- Agricultural
- Commercial
- Institutional Land
- Mixed Use
- Private Forest and Conservation Land
- Recreation
- Residential - High Density
- Residential - Medium Density
- Residential - Low Density
- Transportation
- Utility / Public Services
- Vacant Land

Existing Land Use	Land Area (Acres)	Land Area (%)
Residential - Low Density	8869.5	28.9%
Institutional Land	7875.1	25.6%
Private Forest and Conservation Land	7742.2	25.2%
Vacant Land	5183.5	16.9%
Recreation	566.7	1.85%
Transportation	165.4	0.54%
Agricultural	132.0	0.43%
Commercial	71.2	0.23%
Utility / Public Services	54.0	0.18%
Residential - High Density	28.5	0.09%
Mixed Use	17.3	0.06%
Residential - Medium Density	9.1	0.03%
TOTAL	30714.5	100.0%



Sources:
Esri, NYS ITS, DEC, NPS
Sullivan County, Town of Tusten

0 0.5 1
Miles



This map was prepared for illustrative purposes only and is not suitable for engineering, surveying, or legal purposes.

DRAFT

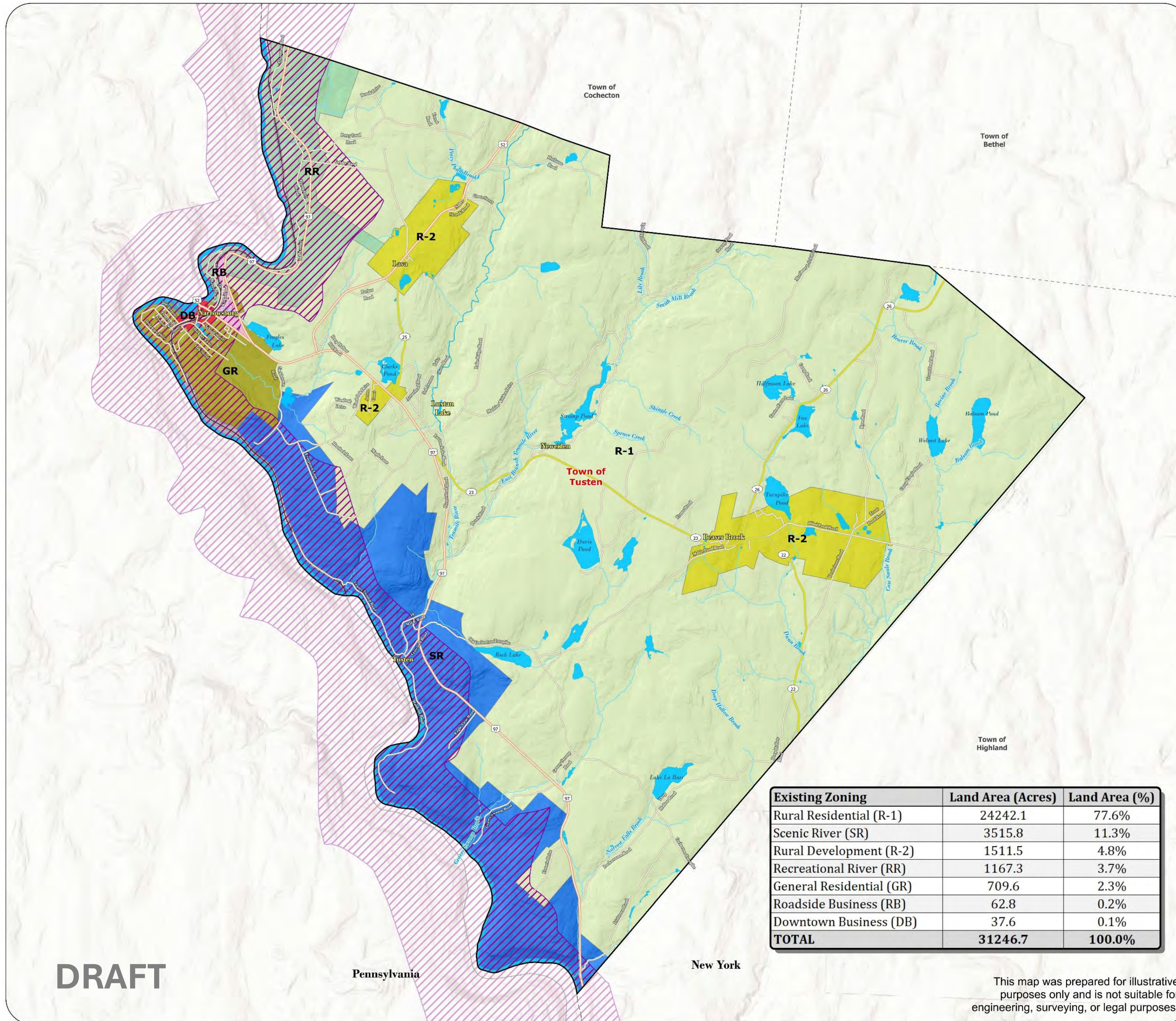
Pennsylvania

New York

Natural Resource Mapping



Town of Tusten
an Upper Delaware River Community

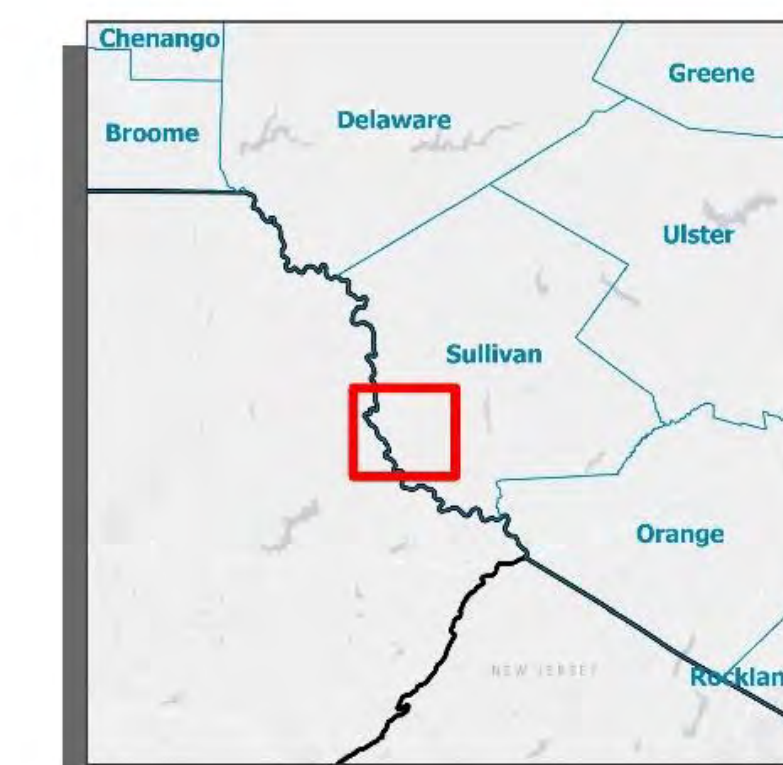


Existing Zoning

LEGEND

- | | |
|-----------------|--------------------------|
| Town of Tusten | Zoning |
| Town Boundary | Downtown Business (DB) |
| County Boundary | General Residential (GR) |
| State Routes | Recreational River (RR) |
| County Routes | Roadside Business (RB) |
| Local Roads | Rural Development (R-2) |
| Railroad | Rural Residential (R-1) |
| UDC Boundary | Scenic River (SR) |
| Waterbody | |
| River / Stream | |

Existing Zoning	Land Area (Acres)	Land Area (%)
Rural Residential (R-1)	24242.1	77.6%
Scenic River (SR)	3515.8	11.3%
Rural Development (R-2)	1511.5	4.8%
Recreational River (RR)	1167.3	3.7%
General Residential (GR)	709.6	2.3%
Roadside Business (RB)	62.8	0.2%
Downtown Business (DB)	37.6	0.1%
TOTAL	31246.7	100.0%



DRAFT

This map was prepared for illustrative purposes only and is not suitable for engineering, surveying, or legal purposes.



Sources:
Esri, NYS ITS, DEC, NPS
Sullivan County, Town of Tusten

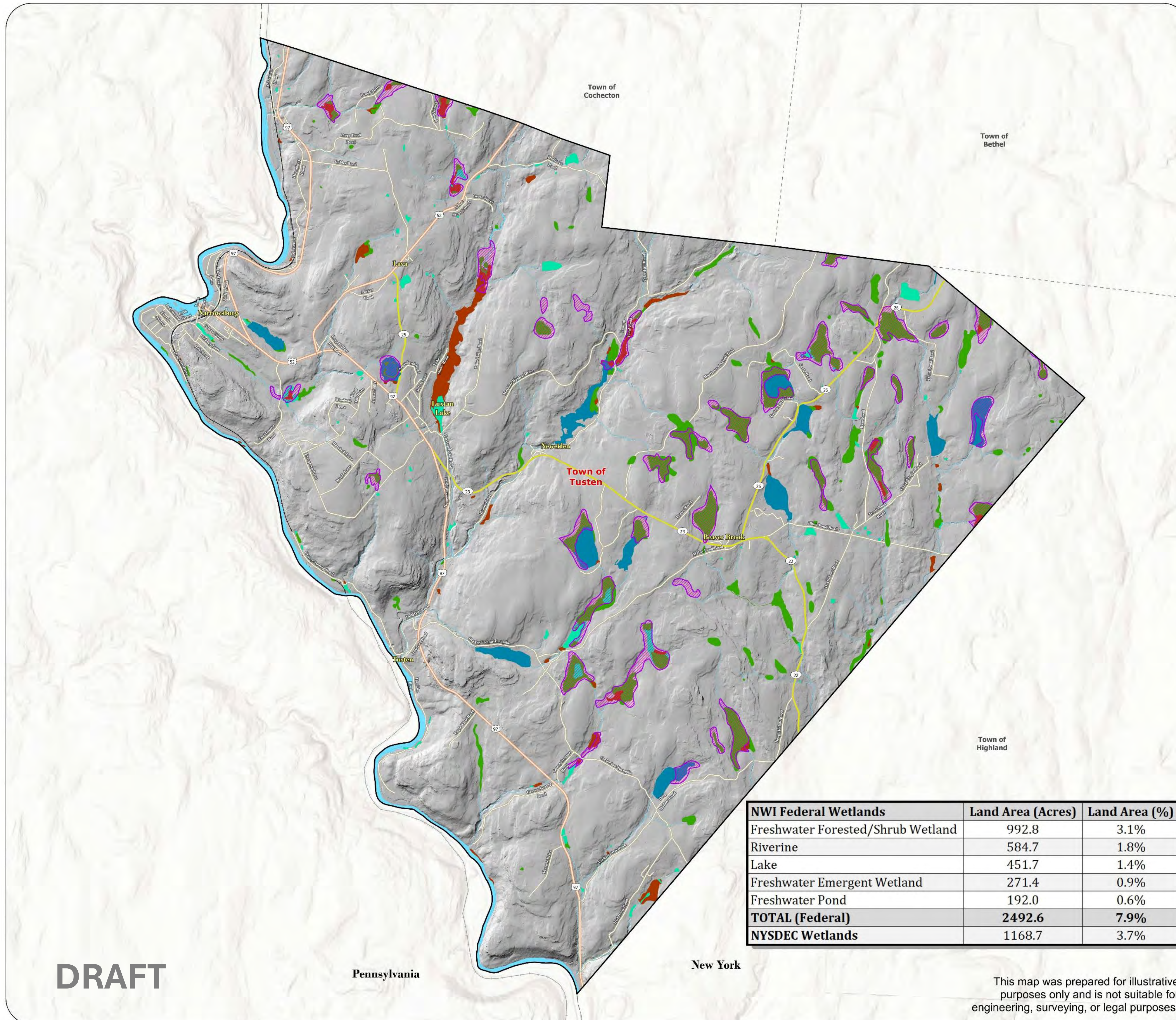
0 0.5 1
Miles



Natural Resource Mapping



Town of **Tusten**
an Upper Delaware River Community

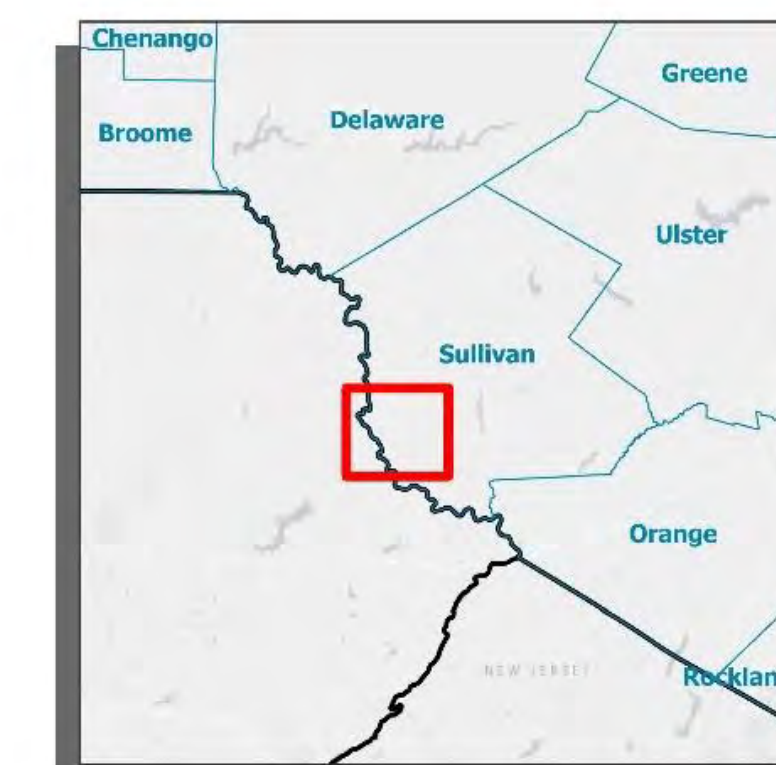


Known Wetlands

LEGEND

- Town of Tusten
- Town Boundary
- County Boundary
- State Routes
- County Routes
- Local Roads
- Railroad
- NYSDEC Wetlands
- NWI Federal Wetlands
- Freshwater Emergent Wetland
- Freshwater Forested/Shrub Wetland
- Freshwater Pond
- Lake
- Riverine

NWI Federal Wetlands	Land Area (Acres)	Land Area (%)
Freshwater Forested/Shrub Wetland	992.8	3.1%
Riverine	584.7	1.8%
Lake	451.7	1.4%
Freshwater Emergent Wetland	271.4	0.9%
Freshwater Pond	192.0	0.6%
TOTAL (Federal)	2492.6	7.9%
NYSDEC Wetlands	1168.7	3.7%



DRAFT

Pennsylvania

New York

This map was prepared for illustrative purposes only and is not suitable for engineering, surveying, or legal purposes.

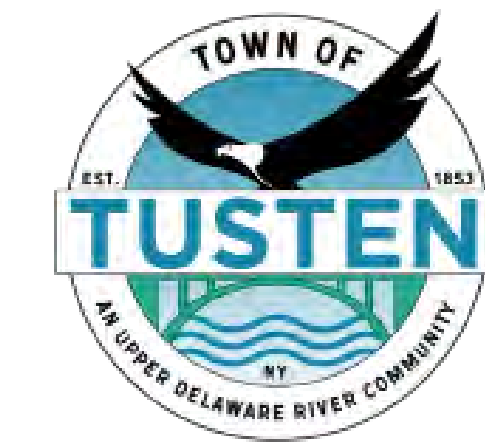


Sources:
Esri, NYS ITS, DEC, NPS
Sullivan County, Town of Tusten

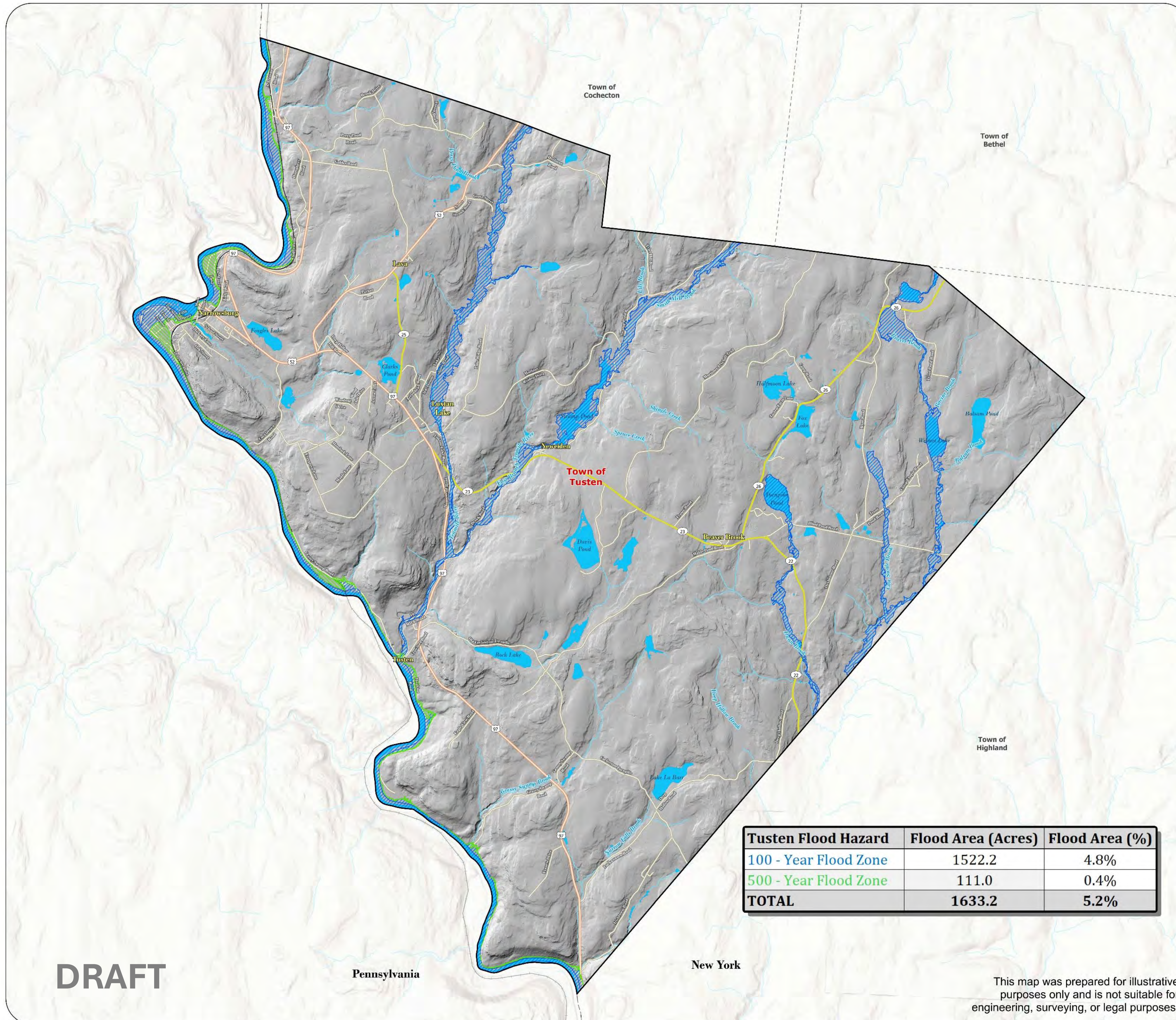
0 0.5 1
Miles



Natural Resource Mapping



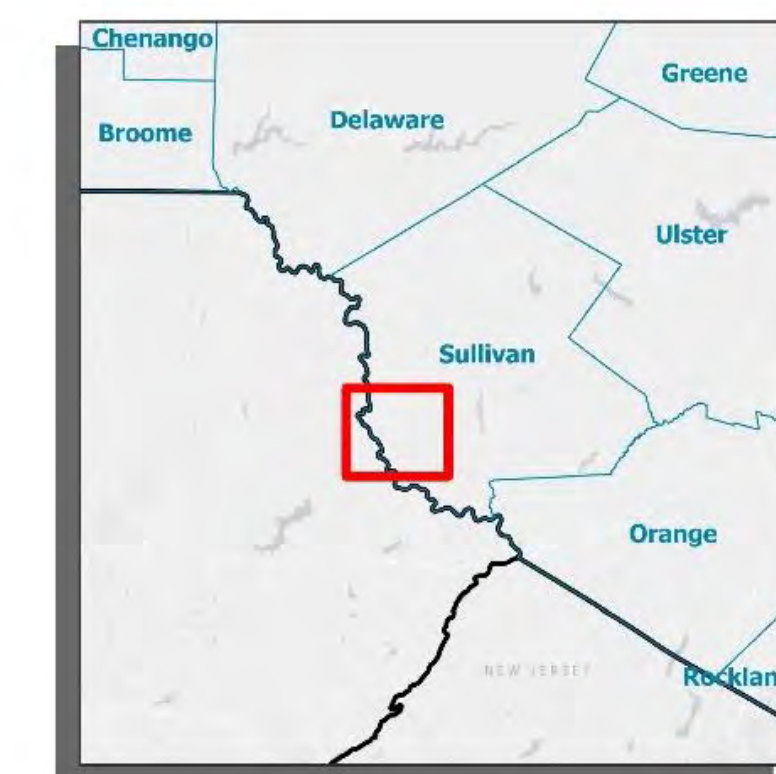
Town of **Tusten**
an Upper Delaware River Community



Flood Hazard Areas

LEGEND

- Town of Tusten
- Town Boundary
- County Boundary
- State Routes
- County Routes
- Local Roads
- Railroad
- Waterbody
- River / Stream
- FEMA Flood Hazard Zones**
- 100-Year Flood Zone
- 500-Year Flood Zone



DRAFT

This map was prepared for illustrative purposes only and is not suitable for engineering, surveying, or legal purposes.



Sources:
Esri, NYS ITS, DEC, NPS
Sullivan County, Town of Tusten

0 0.5 1
Miles



Tusten's Unique Location on the Delaware River

The Town of Tusten shares 14 miles of shoreline with the Delaware River along its western boundary. The river and shoreline area is a National Recreational and Scenic River stretching for 73 miles from Hancock to Port Jervis. The area is managed by the National Parks Service and the Upper Delaware Council.

What does it mean to be a Recreational River Area?

Recreational River areas indicate areas where the shoreline is more developed and easier for public access.

What does it mean to be a Scenic River Area?

Scenic river areas indicate areas of primarily undeveloped shoreline.

The Delaware River is an important habitat for wildlife such as Bald Eagles, Great Blue Herons, otters, white-tailed deer, salamanders and Timber Rattlesnakes.

Recreation within the Town is also influenced by the Delaware River. Locals and seasonal visitors have access to kayaking, canoeing, rafting, bird watching, fishing and other activities along the scenic shoreline.



NYSDEC Boat Launch in Narrowsburg along the Delaware River.



Delaware River Access near the Ten Mile River.



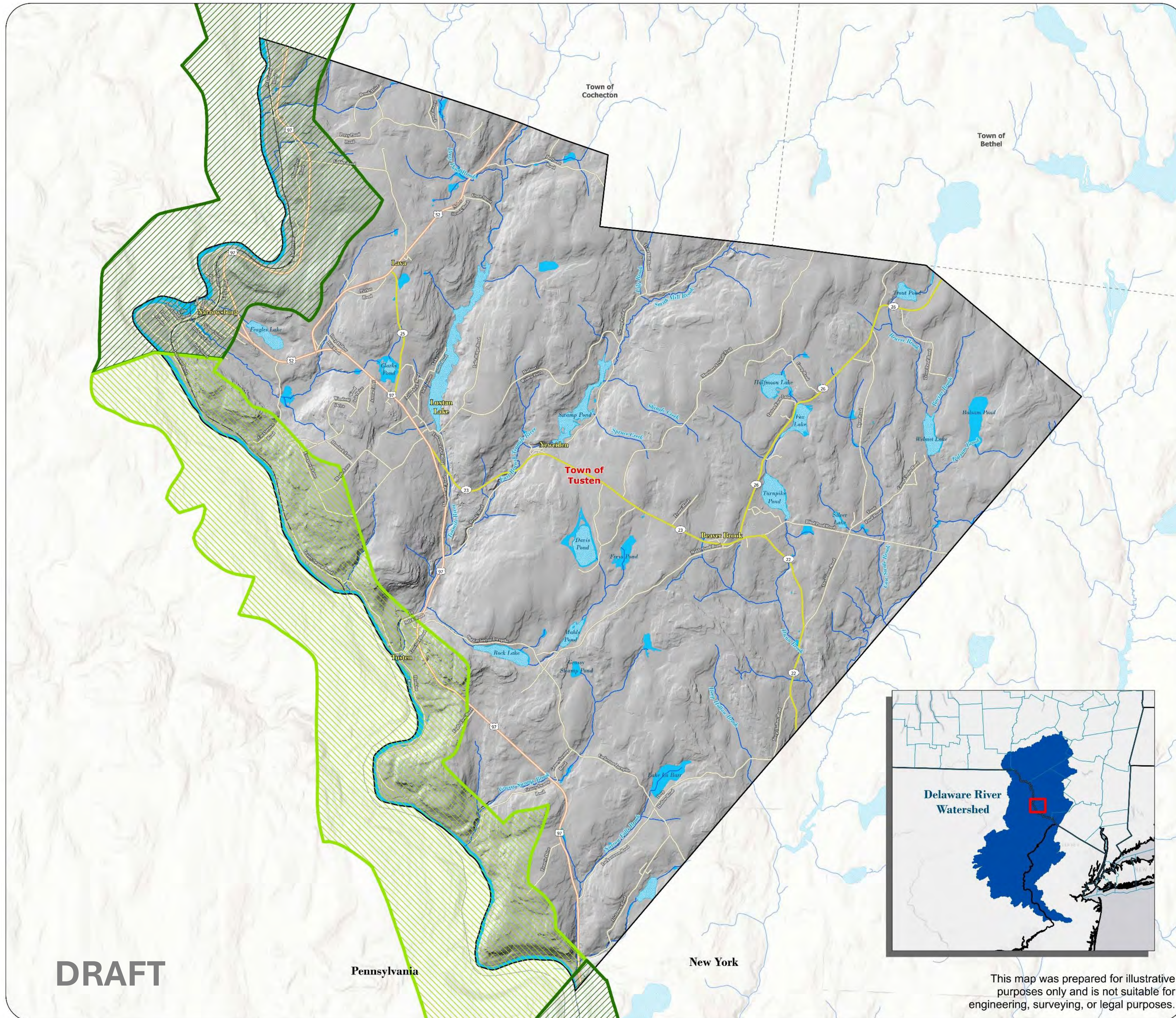
The Delaware River shoreline is an important winter habitat for the Bald Eagle.



Natural Resource Mapping



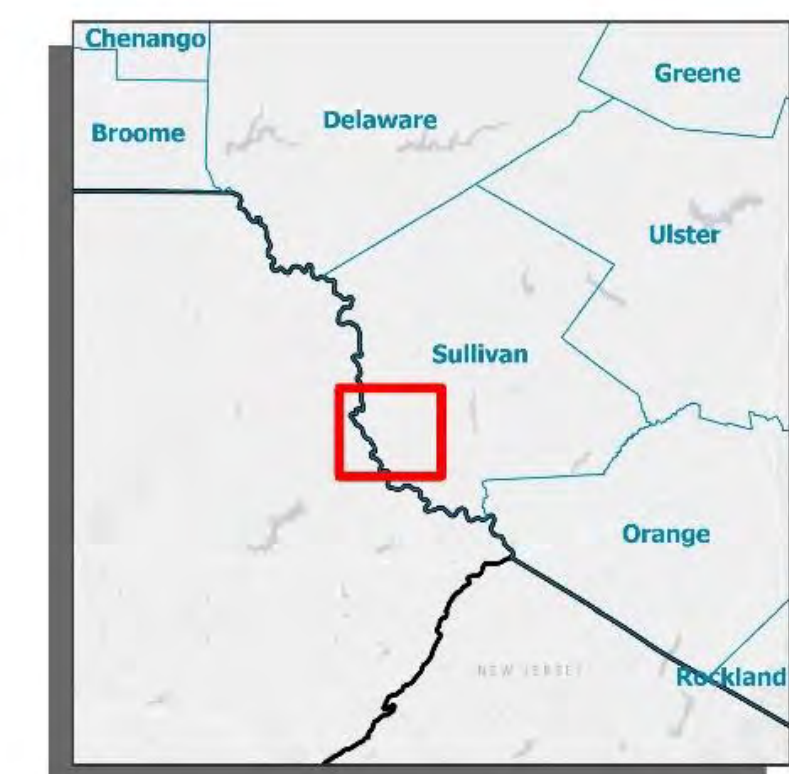
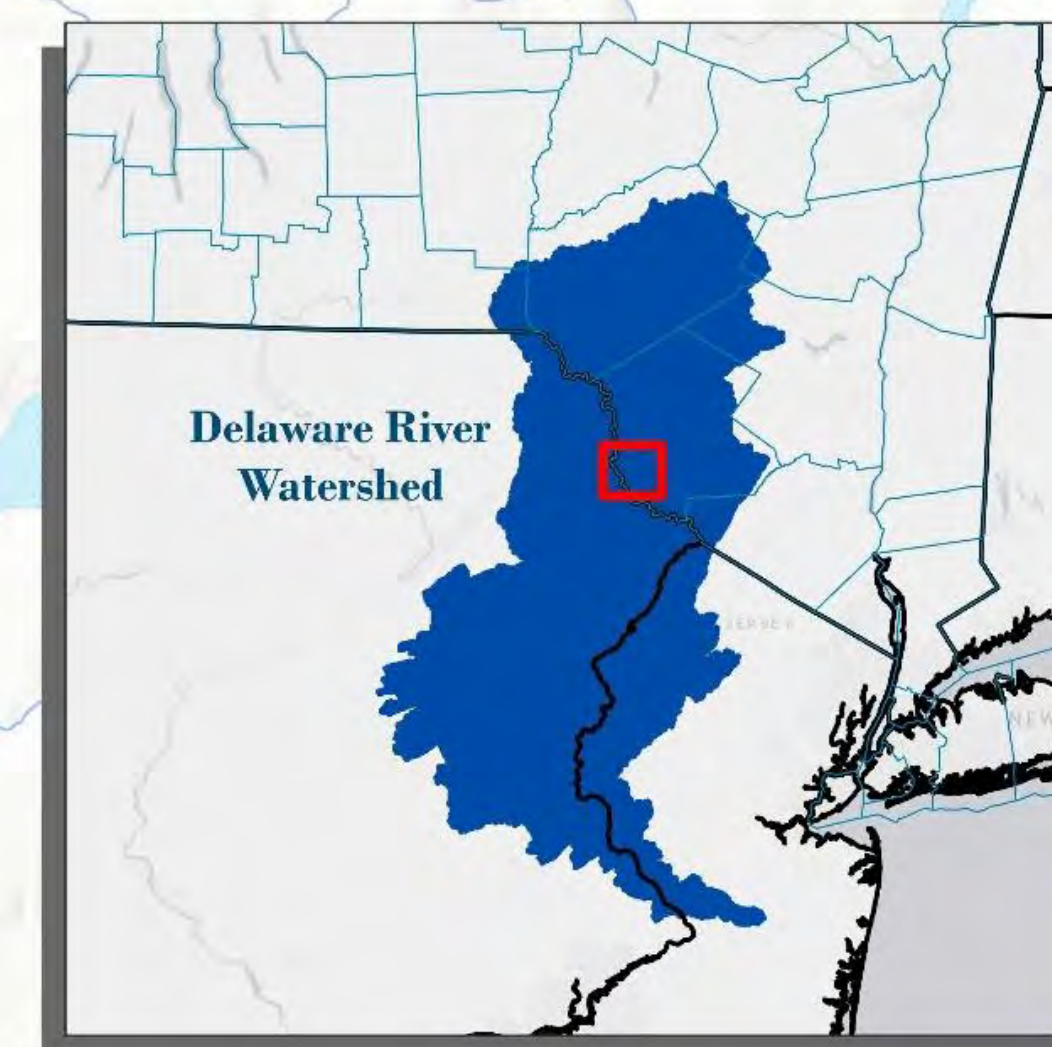
Town of Tusten
an Upper Delaware River Community



Delaware Riverbank & Hydrology

LEGEND

- Town of Tusten
- Town Boundary
- County Boundary
- State Routes
- County Routes
- Local Roads
- Railroad
- DEC Streams
- DEC Lakes
- Watershed Boundary
- Waterbody
- Upper Delaware River Administrative Boundary Type**
- Recreational
- Scenic



DRAFT

Pennsylvania

New York

This map was prepared for illustrative purposes only and is not suitable for engineering, surveying, or legal purposes.



Sources:
Esri, NYS ITS, DEC, NPS
Sullivan County, Town of Tusten

0 0.5 1
Miles

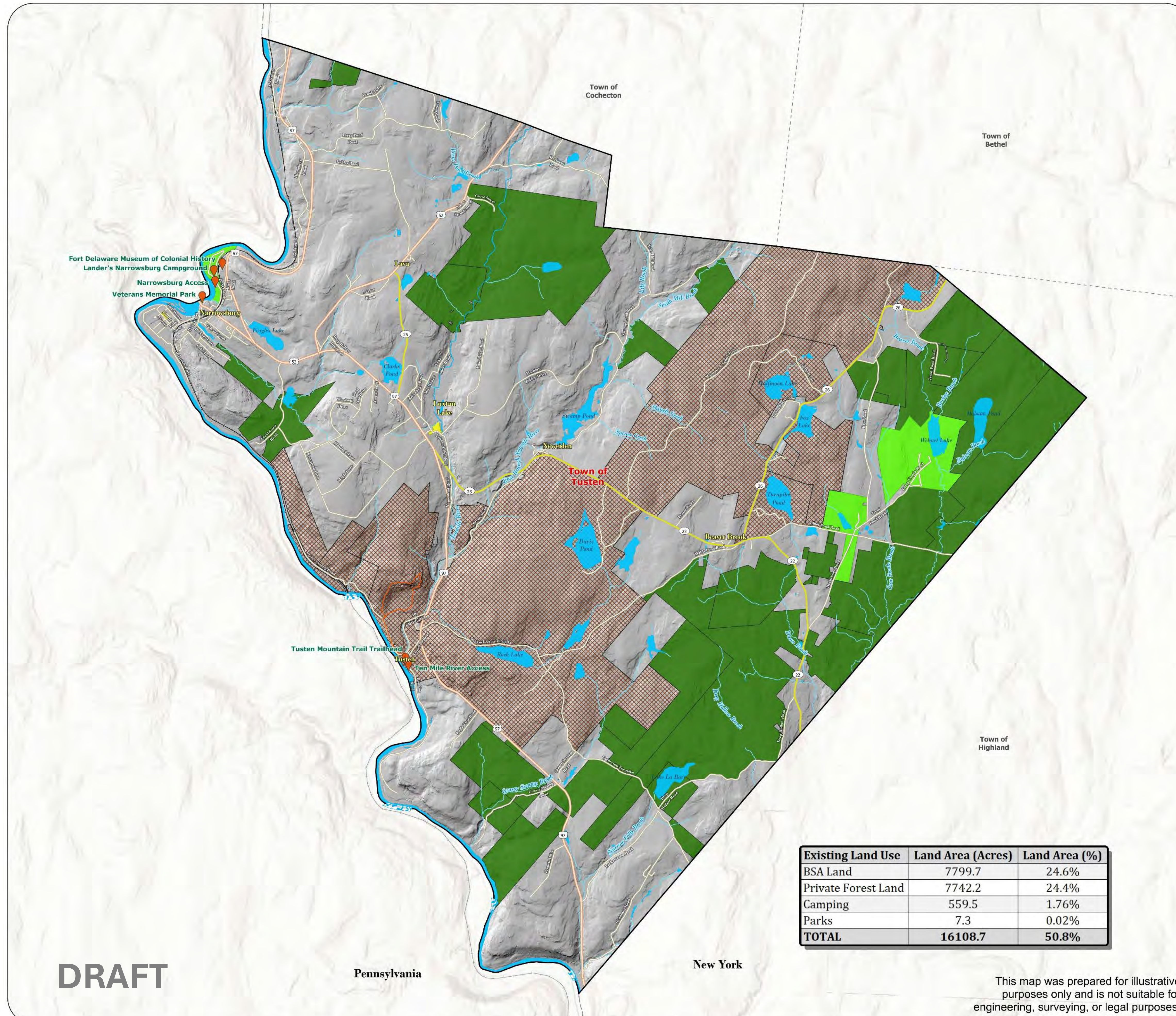


Natural Resource Mapping



Town of **Tusten**
an Upper Delaware River Community

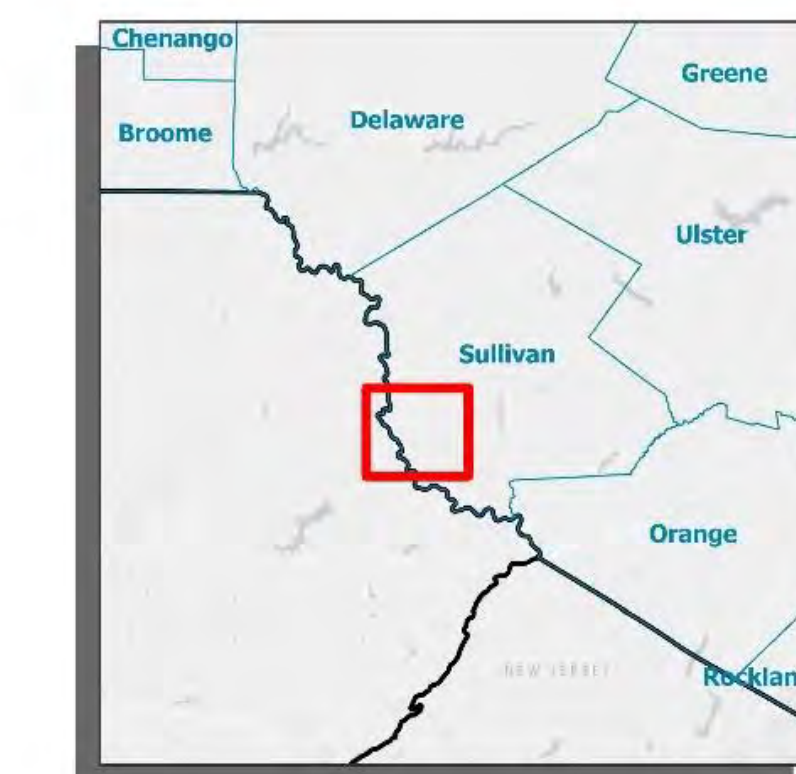
Parks, Recreation & Open Space



LEGEND

- Town of Tusten
- Town Boundary
- County Boundary
- State Routes
- County Routes
- Local Roads
- Railroad
- Waterbody
- River / Stream
- River Rapids
- Hiking Trail
- Points of Interest
- Camping
- Private Forest Land
- Parks
- BSA Land

Existing Land Use	Land Area (Acres)	Land Area (%)
BSA Land	7799.7	24.6%
Private Forest Land	7742.2	24.4%
Camping	559.5	1.76%
Parks	7.3	0.02%
TOTAL	16108.7	50.8%



DRAFT

This map was prepared for illustrative purposes only and is not suitable for engineering, surveying, or legal purposes.

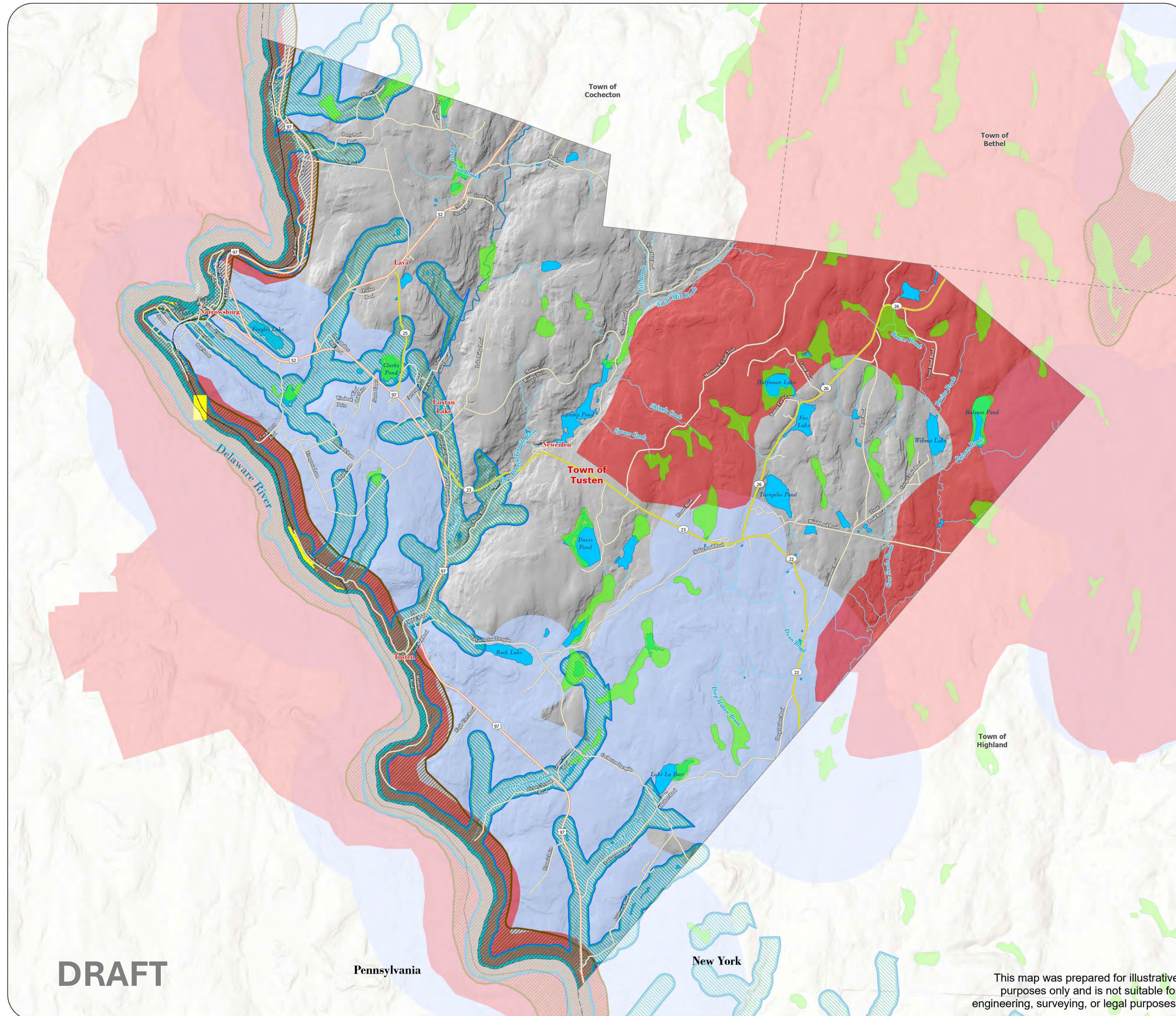


Sources:
Esri, NYS ITS, DEC, NPS
Sullivan County, Town of Tusten

0 0.5 1
Miles

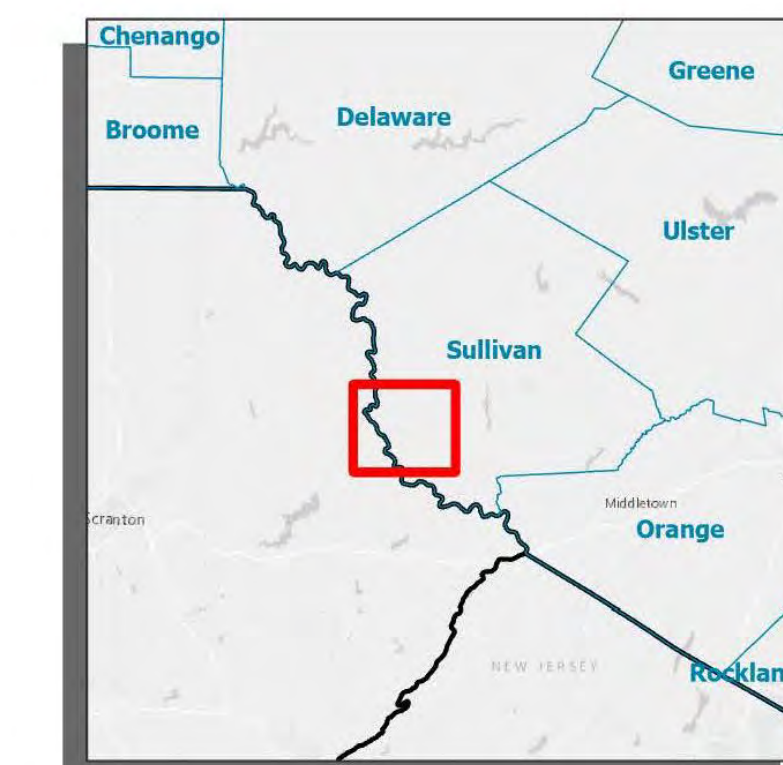


Habitats, Biodiversity & Ecological Communities



LEGEND

-  Town Boundary
-  County Boundary
-  State Routes
-  County Routes
-  Local Roads
-  Railroad
-  Waterbody
-  River / Stream
-  State Regulated Freshwater Wetlands
-  Significant Natural Communities
-  Rare Plants or Rare Animals
-  Important Areas: Aquatic Animals
-  Important Areas: Terrestrial Animals
-  Important Areas: Birds



0 0.5 1
Miles



Sources:
Esri, NYS ITS, DEC, NYNHP,
NPS, Sullivan County, Town of
Tusten

This map was prepared for illustrative
purposes only and is not suitable for
engineering, surveying, or legal purposes.

DRAFT

Open Space Vision & Values



In the 2020 Comprehensive Plan survey, 57% of respondents indicated that “Open Space and Scenery” was a key reason they live, own land or keep a residence in Tusten.

What specific types of open space and scenery are most important to you?

Post-It Notes Here

Post-It Notes Here



Open Space Vision & Values



What natural resources within Tusten are most important to you?
(i.e. wetlands, wildlife habitat, woodlands, rivers, etc)

Post-It Notes Here

Post-It Notes Here



Open Space Vision & Values



What phrases or words best describe your values or passion for natural resources and open space in Tusten?

Post-It Notes Here

Post-It Notes Here



MAPPING EXERCISE

Use the map on the table and the sticky notes or markers provided to show where you go for recreation!

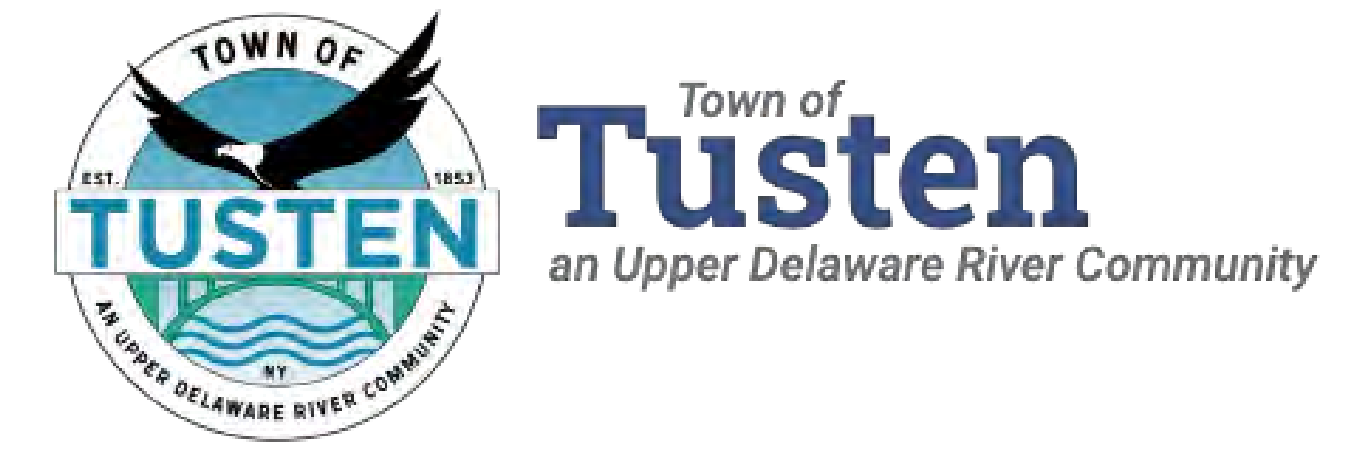


What types of recreation do you participate in?
Add a dot to the board.

Bicycling	Birding/Wildlife viewing	Camping
Cross Country Skiing/Snowshoeing	Fishing	Hiking/Walking
Hunting	Paddling (canoes/kayak/SUP)	Playgrounds/Picnicking
Swimming	Other	



Recreation Station



What specific types of public recreation would you like to see more of in Tusten?

Post-It Notes Here

Where would you like to see more public recreation?

Post-It Notes Here



5

Other Thoughts & Ideas



Town of
Tusten
an Upper Delaware River Community

Share any additional thoughts and ideas you have for about Natural Resources,
Open Space or Recreation for the Town of Tusten here!

Post-It Notes Here

Post-It Notes Here

