

Town of Tusten

Natural Resources Inventory,
Open Space and Recreation Plan



Town of
Tusten
an Upper Delaware River Community

Meeting #2

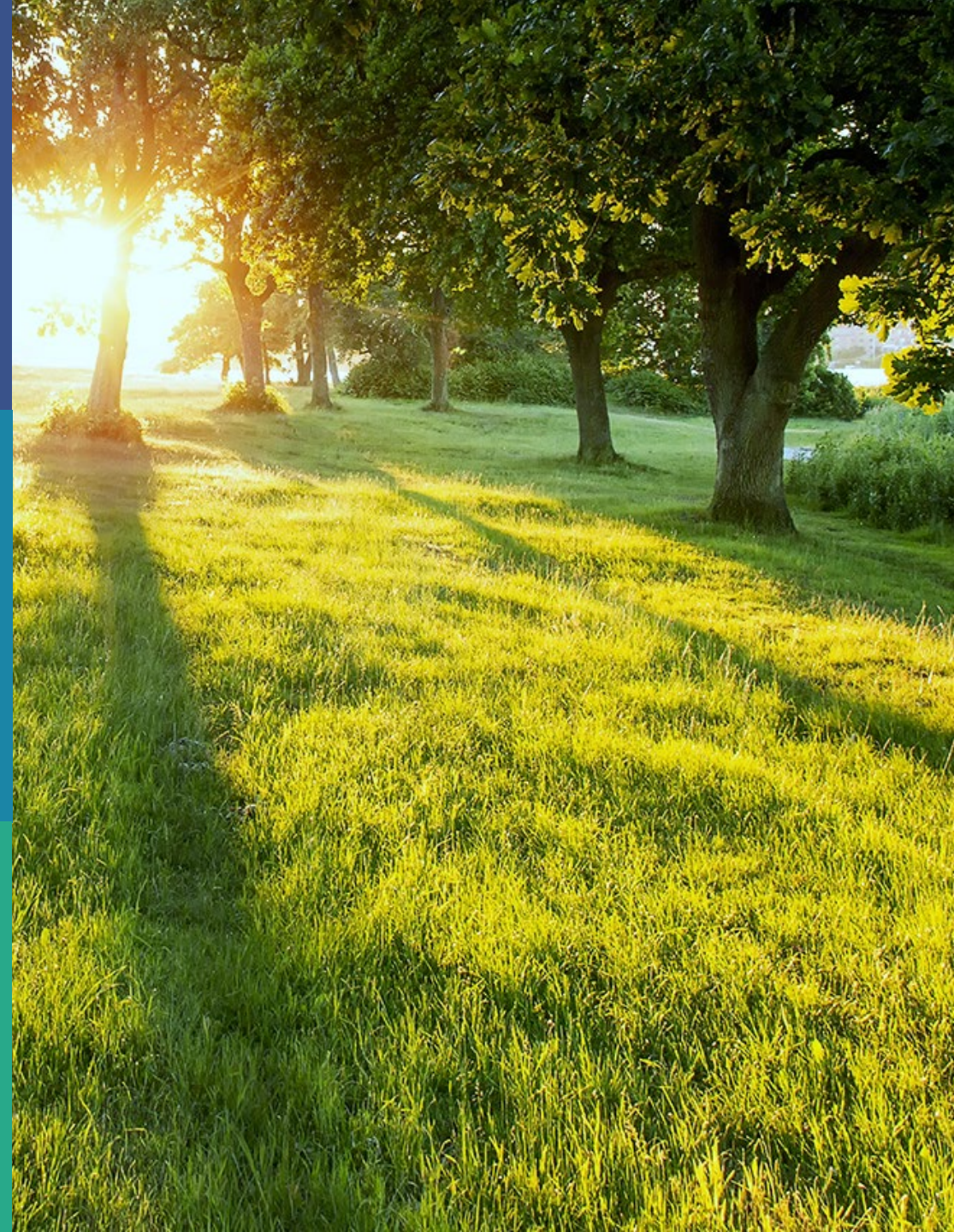
June 20, 2024 at 1:00 PM

Agenda

- 01** Welcome & Schedule Update
- 02** Natural Resources Inventory
- 03** Public Engagement
- 04** Next Steps



Town of
Tusten
an Upper Delaware River Community



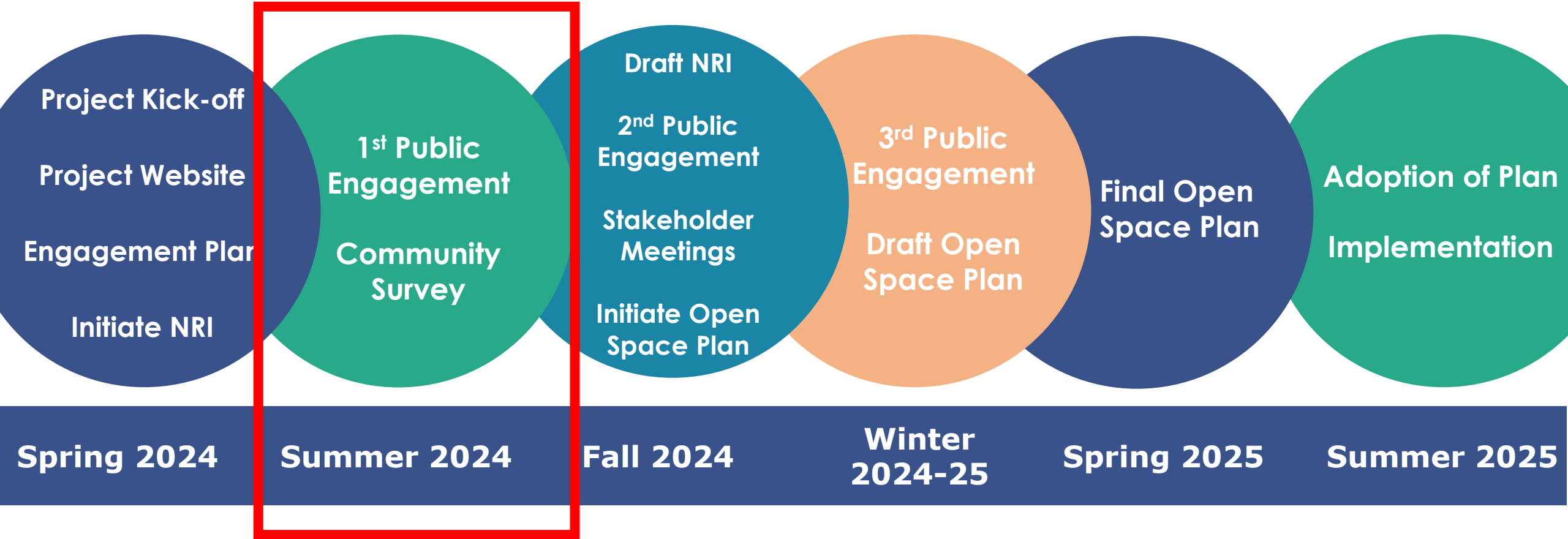


WELCOME & SCHEDULE UPDATE



Town of
Tusten
an Upper Delaware River Community

Anticipated Project Schedule



*CAC Meetings – Every other month



Town of Tusten
an Upper Delaware River Community



Tusten Site Visit

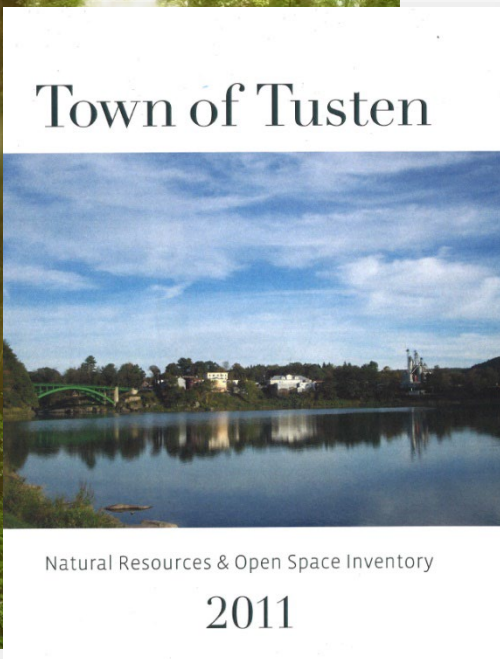
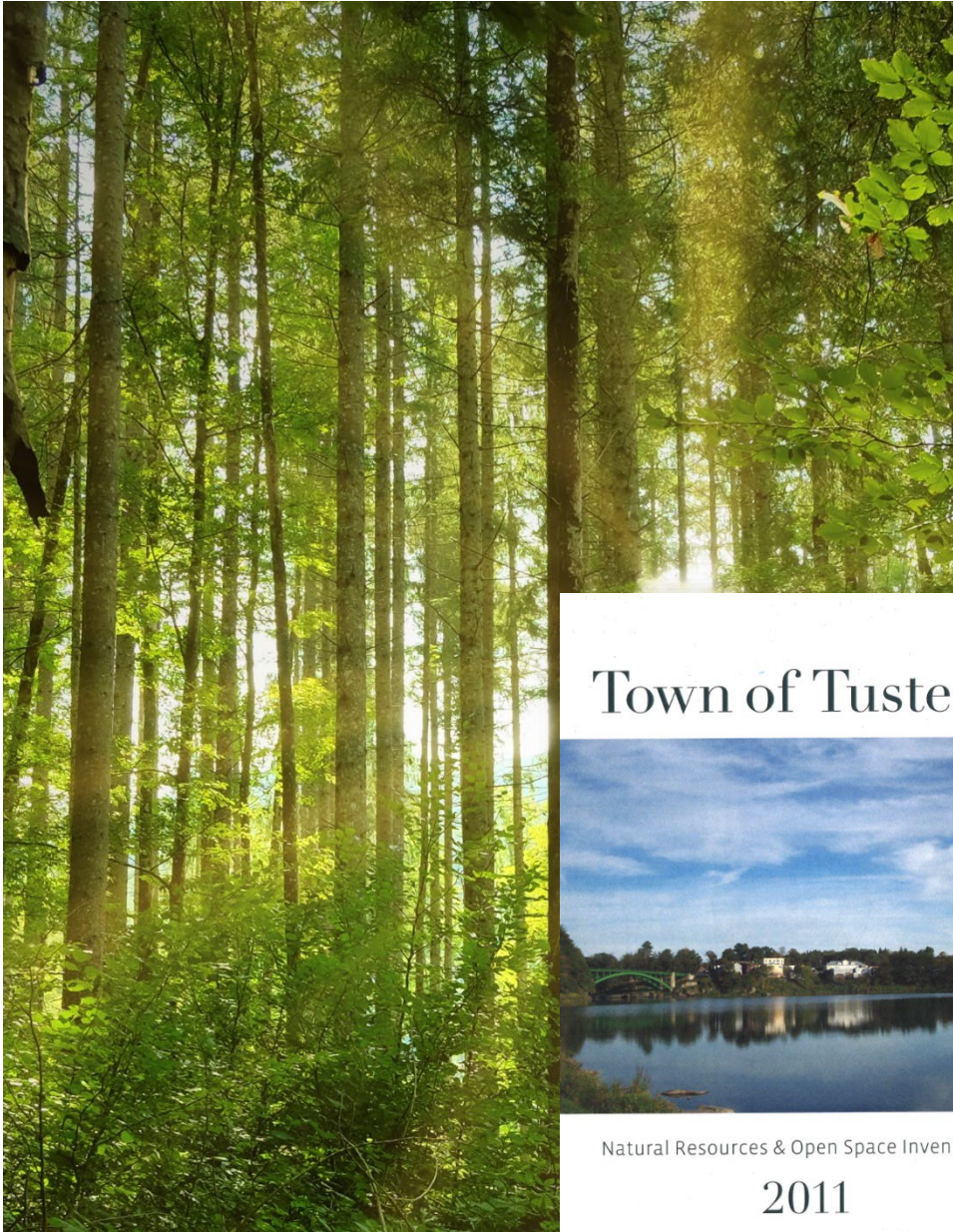


NATURAL RESOURCES INVENTORY



Town of
Tusten
an Upper Delaware River Community





Overview

- ❖ **Update of 2011 Natural Resources and Open Space Inventory**
- ❖ **Align with DEC recommendations**
- ❖ **Most recent available environmental data**

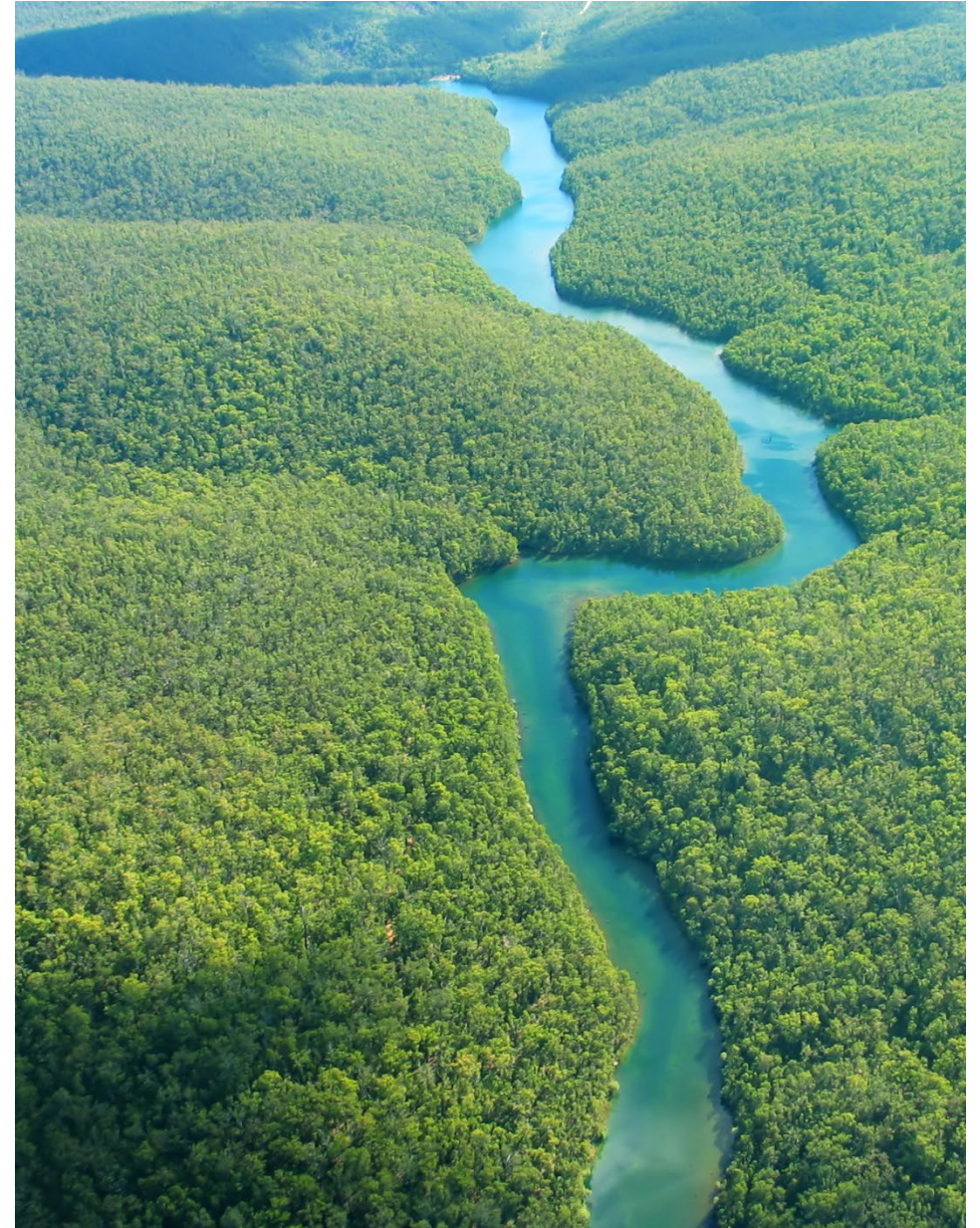


Town of
Tusten
an Upper Delaware River Community



Overview (cont'd)

- ❖ **Narrative and Map Series**
- ❖ **Identifies the Town's Existing Environmental Resources & Constraints**
 - ❖ Wildlife Habitats
 - ❖ Flooding & Resiliency
 - ❖ Water Resources
 - ❖ Land Resources
- ❖ **Resource to inform future planning, land use, and Open Space and Recreation Plan**





Outline

- ❖ **Introduction & Community Overview**
- ❖ **Background Mapping**
 - ❖ Base, Aerial Map
 - ❖ Elevation and Steep Slopes



Town of
Tusten
an Upper Delaware River Community





Outline (cont'd)

- ❖ **Water Resources**
 - ❖ Delaware River and Watershed
 - ❖ Drinking Water
 - ❖ Wetlands
 - ❖ Flood Hazard Areas



Town of
Tusten
an Upper Delaware River Community





Outline (cont'd)

❖ Land Resources

- ❖ Geology
- ❖ Soils and Agriculture
- ❖ Habitats and Wildlife
(forests, rare species, etc)

❖ Resilience

- ❖ Climate, Air Quality



Town of
Tusten
an Upper Delaware River Community





Outline (cont'd)

❖ Land Use

- ❖ Zoning, Land Use
- ❖ Regulated Facilities
- ❖ Cultural & Historic Sites

❖ Utilizing the NRI

- ❖ Open Space Plan



Town of
Tusten
an Upper Delaware River Community

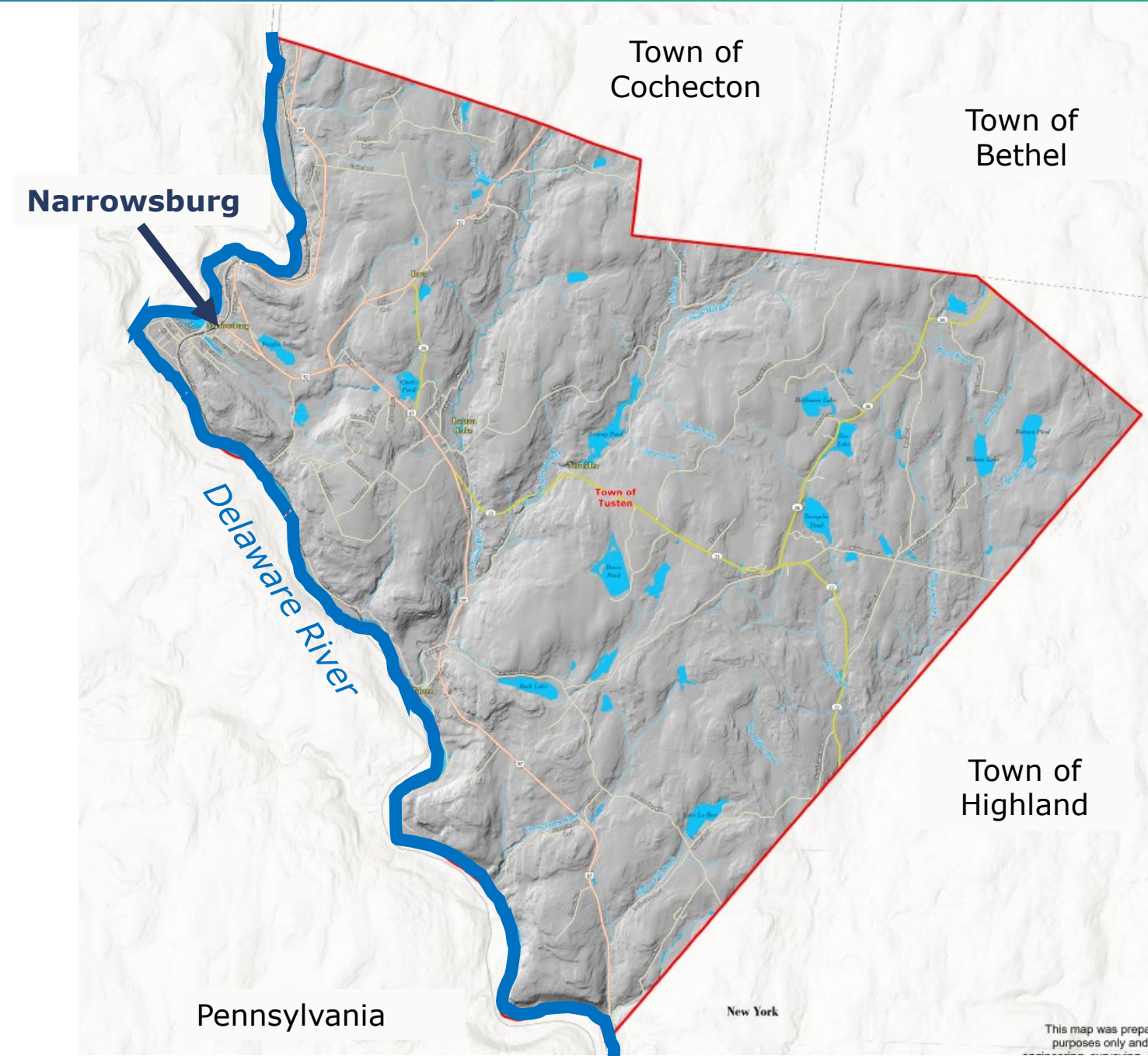


Draft Mapping Highlights

- ❖ Base & Aerial Map
- ❖ Existing Zoning
- ❖ Existing Land Use
- ❖ Elevation and Steep Slopes
- ❖ Parks, Recreation and Open Space
- ❖ Delaware River & Key Waterways
- ❖ Wetlands
- ❖ Flood Zones

Base Map

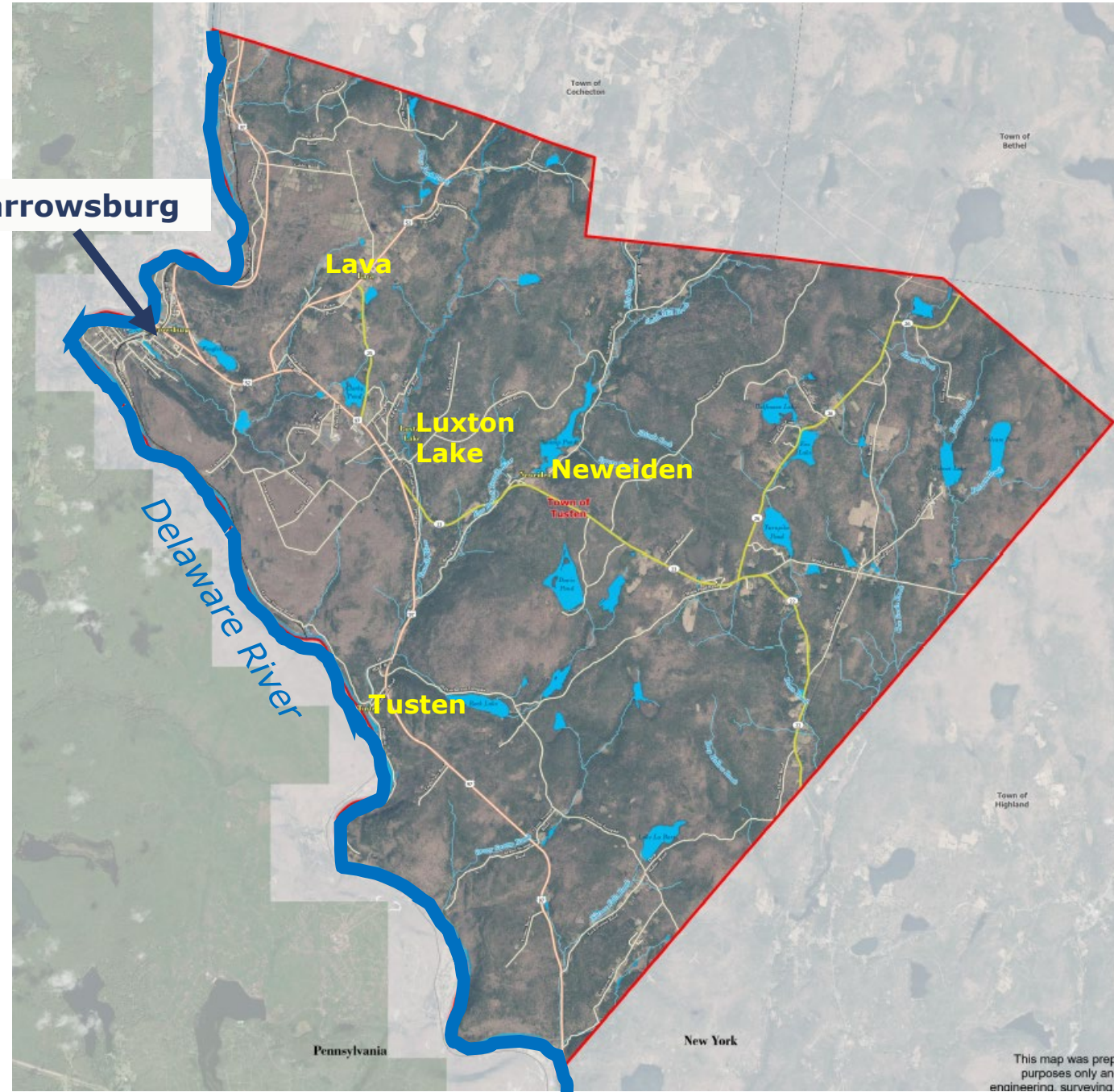
- ❖ Sullivan County
- ❖ Town Covers 49.5 square miles of land
- ❖ Bordered by:
 - ❖ Town of Cochecton
 - ❖ Town of Bethel
 - ❖ Town of Highland
 - ❖ Pennsylvania
 - ❖ Delaware River



Aerial Map

- ❖ NYS Imagery 2021
- ❖ Hamlets include:
 - ❖ Narrowsburg
 - ❖ Luxton Lake
 - ❖ Tusten
 - ❖ Neweiden
 - ❖ Lava

Narrowsburg



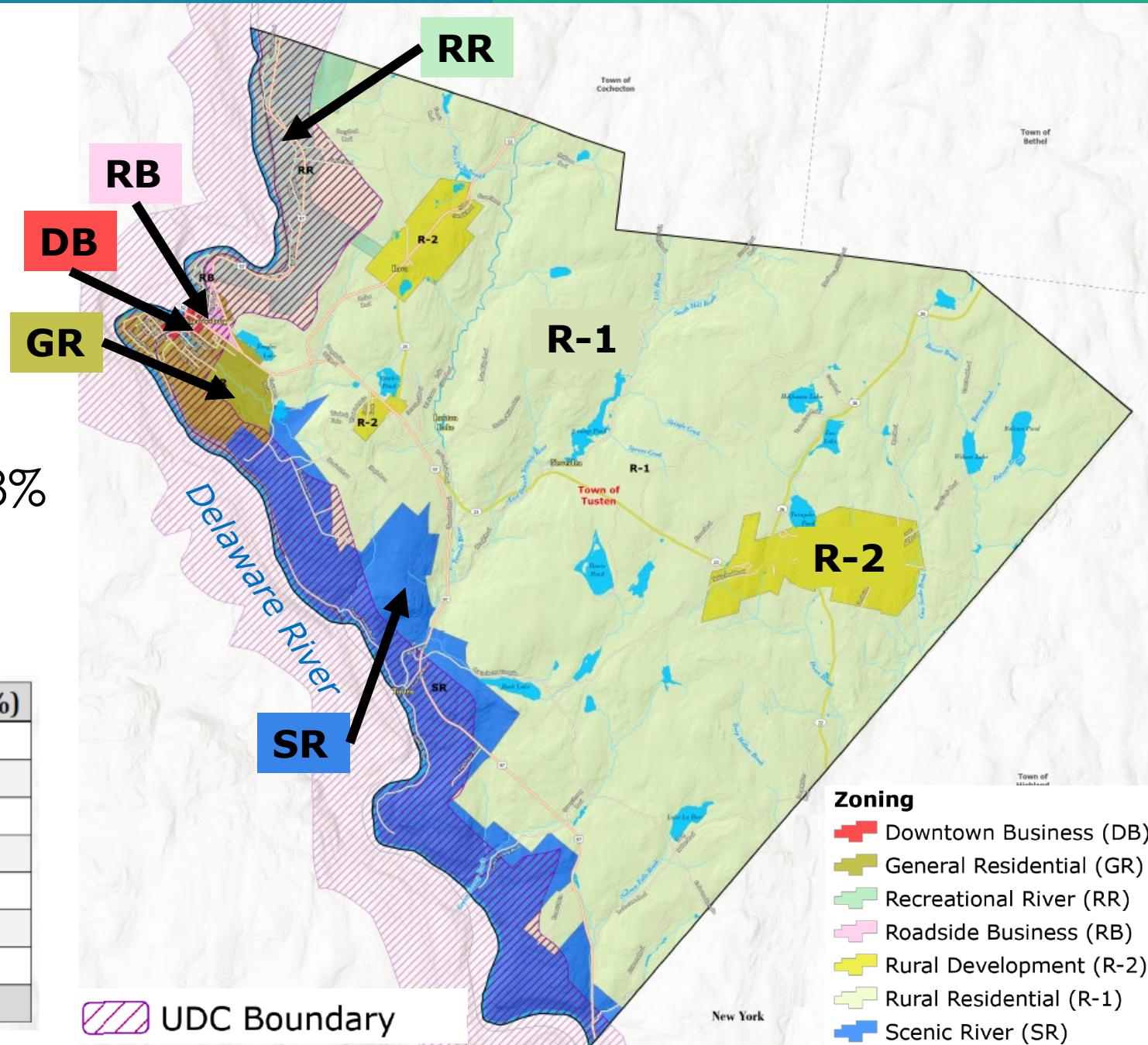
Existing Zoning

❖ 7 Zoning Districts

❖ Largest include

- ❖ Rural Residential (R-1) – 78%
- ❖ Scenic River (SR) – 11%

Existing Zoning	Land Area (Acres)	Land Area (%)
Rural Residential (R-1)	24242.1	77.6%
Scenic River (SR)	3515.8	11.3%
Rural Development (R-2)	1511.5	4.8%
Recreational River (RR)	1167.3	3.7%
General Residential (GR)	709.6	2.3%
Roadside Business (RB)	62.8	0.2%
Downtown Business (DB)	37.6	0.1%
TOTAL	31246.7	100.0%



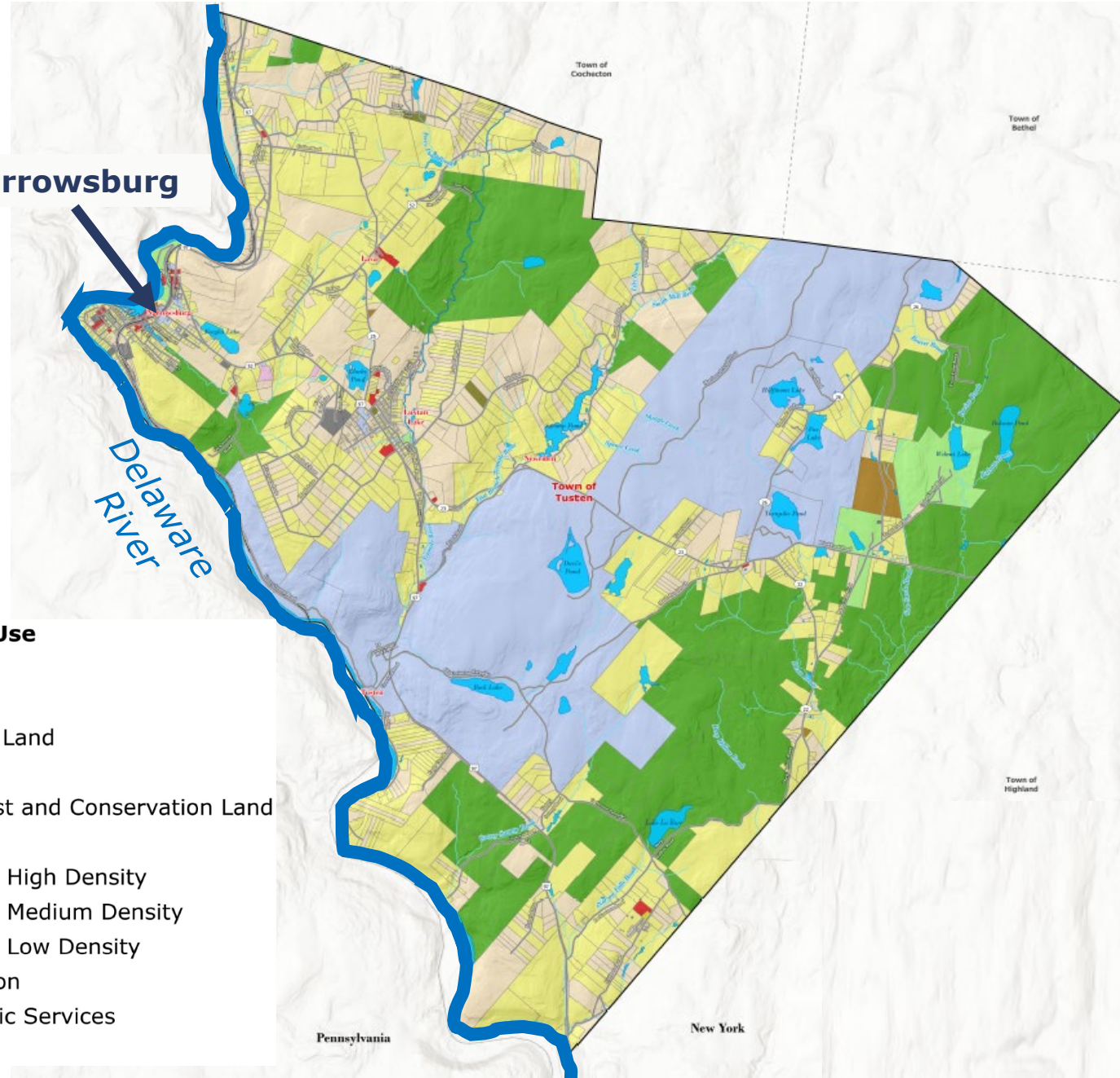
Land Use

❖ 2023 County Tax Data

❖ Largest Land Uses:

- ❖ Residential – Low Density (29%)
- ❖ Institutional (including Boy Scout Properties) (26%)
- ❖ Private Forest/Conservation Land (25%)

Narrowsburg



Existing Land Use

- Agricultural
- Commercial
- Institutional Land
- Mixed Use
- Private Forest and Conservation Land
- Recreation
- Residential - High Density
- Residential - Medium Density
- Residential - Low Density
- Transportation
- Utility / Public Services
- Vacant Land

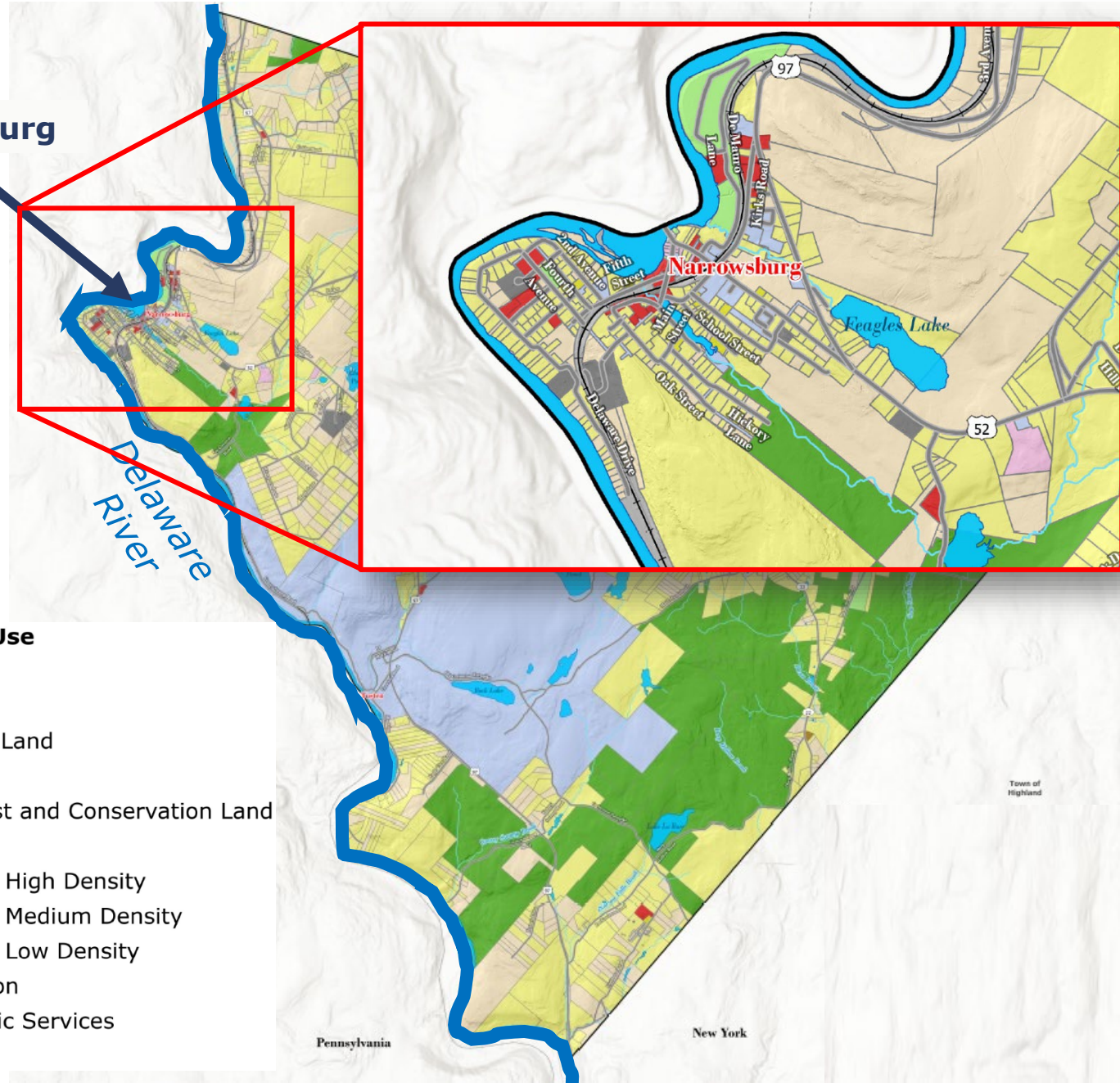
Existing Land Use	Land Area (Acres)	Land Area (%)
Residential - Low Density	8869.5	28.9%
Institutional Land	7875.1	25.6%
Private Forest and Conservation Land	7742.2	25.2%
Vacant Land	5183.5	16.9%
Recreation	566.7	1.85%
Transportation	165.4	0.54%
Agricultural	132.0	0.43%
Commercial	71.2	0.23%
Utility / Public Services	54.0	0.18%
Residential - High Density	28.5	0.09%
Mixed Use	17.3	0.06%
Residential - Medium Density	9.1	0.03%
TOTAL	30714.5	100.0%

Land Use

❖ 2023 County Tax Data

❖ Largest Land Uses:

- ❖ Residential – Low Density (29%)
- ❖ Institutional (including Boy Scout Properties) (26%)
- ❖ Private Forest/Conservation Land (25%)



Existing Land Use	Land Area (Acres)	Land Area (%)
Residential - Low Density	8869.5	28.9%
Institutional Land	7875.1	25.6%
Private Forest and Conservation Land	7742.2	25.2%
Vacant Land	5183.5	16.9%
Recreation	566.7	1.85%
Transportation	165.4	0.54%
Agricultural	132.0	0.43%
Commercial	71.2	0.23%
Utility / Public Services	54.0	0.18%
Residential - High Density	28.5	0.09%
Mixed Use	17.3	0.06%
Residential - Medium Density	9.1	0.03%
TOTAL	30714.5	100.0%

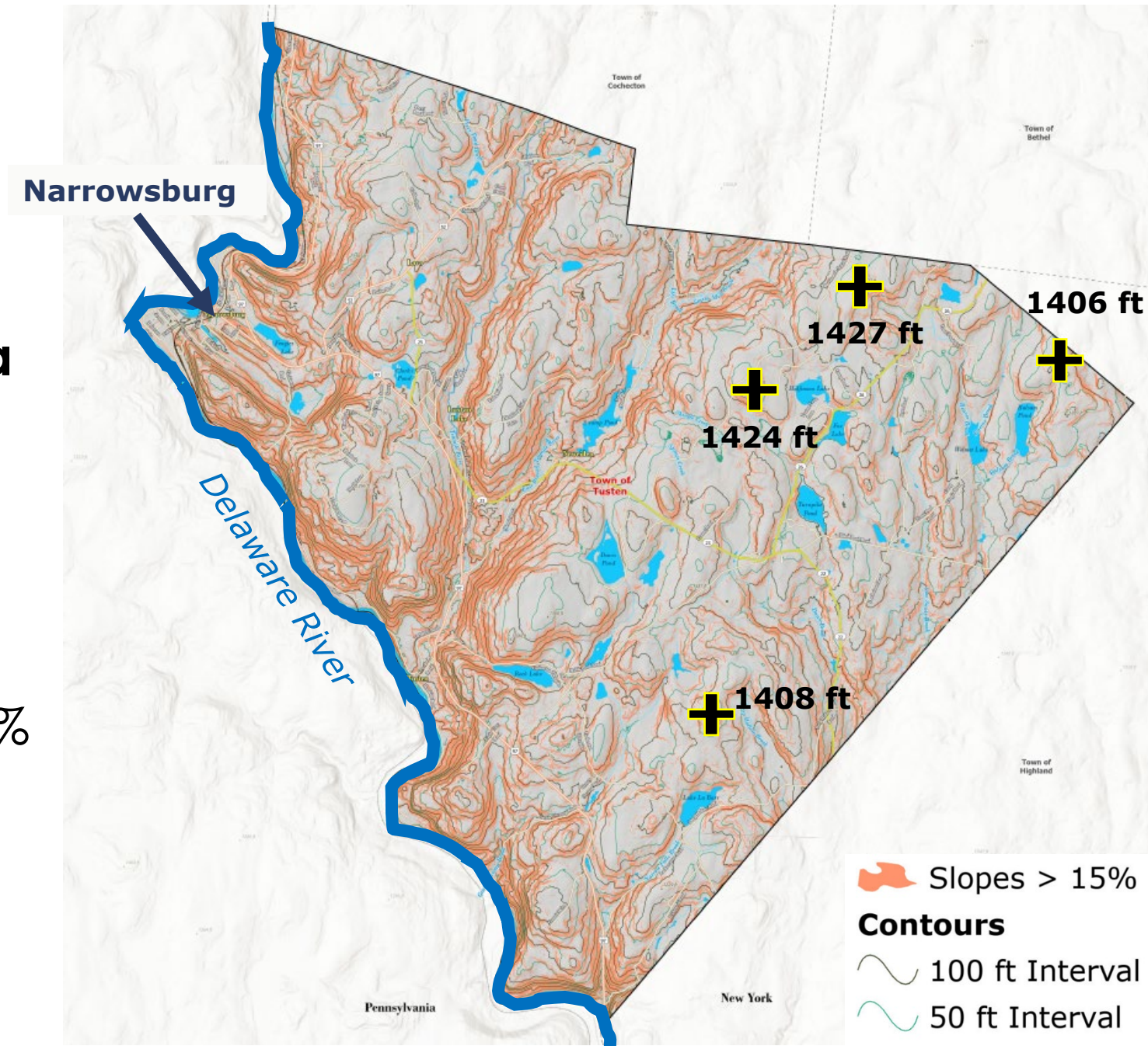
Elevation & Steep Slopes

❖ USGS Digital Elevation Data

- ❖ High Points >1400 feet
- ❖ Lowest Point: Delaware River <650 feet

❖ Steep Slopes

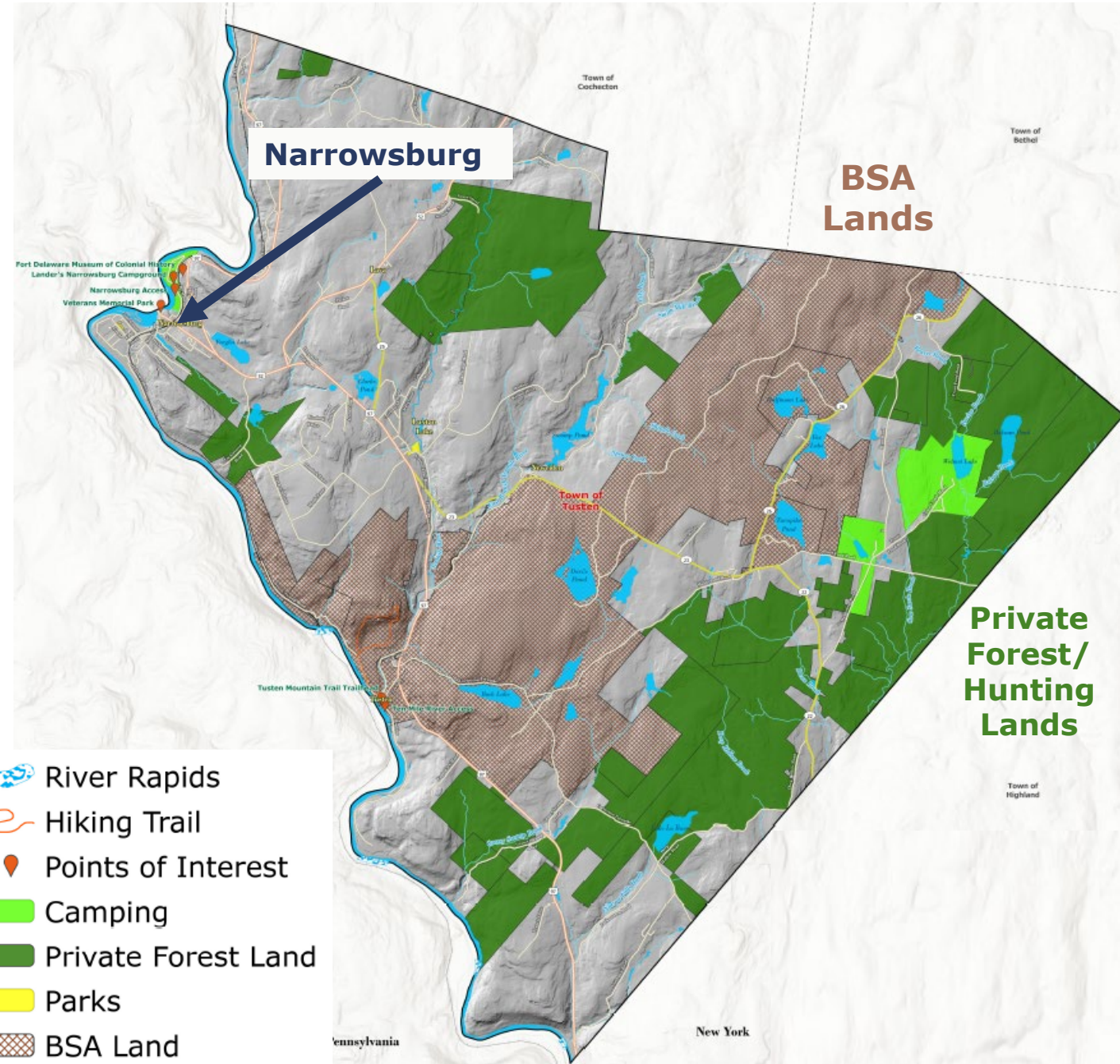
- ❖ Areas of Land grade > 15%
- ❖ Steeps slopes cover 27% land area



Parks, Recreation & Open Space

- ❖ Boy Scout Lands ~ 25%
- ❖ Private Forest/ Hunting Grounds ~24%
- ❖ Campgrounds
 - ❖ Public – Landers
- ❖ Trails – Tusten Mountain Loop (3.4 Mi)

Existing Land Use	Land Area (Acres)	Land Area (%)
BSA Land	7799.7	24.6%
Private Forest Land	7742.2	24.4%
Camping	559.5	1.76%
Parks	7.3	0.02%
TOTAL	16108.7	50.8%



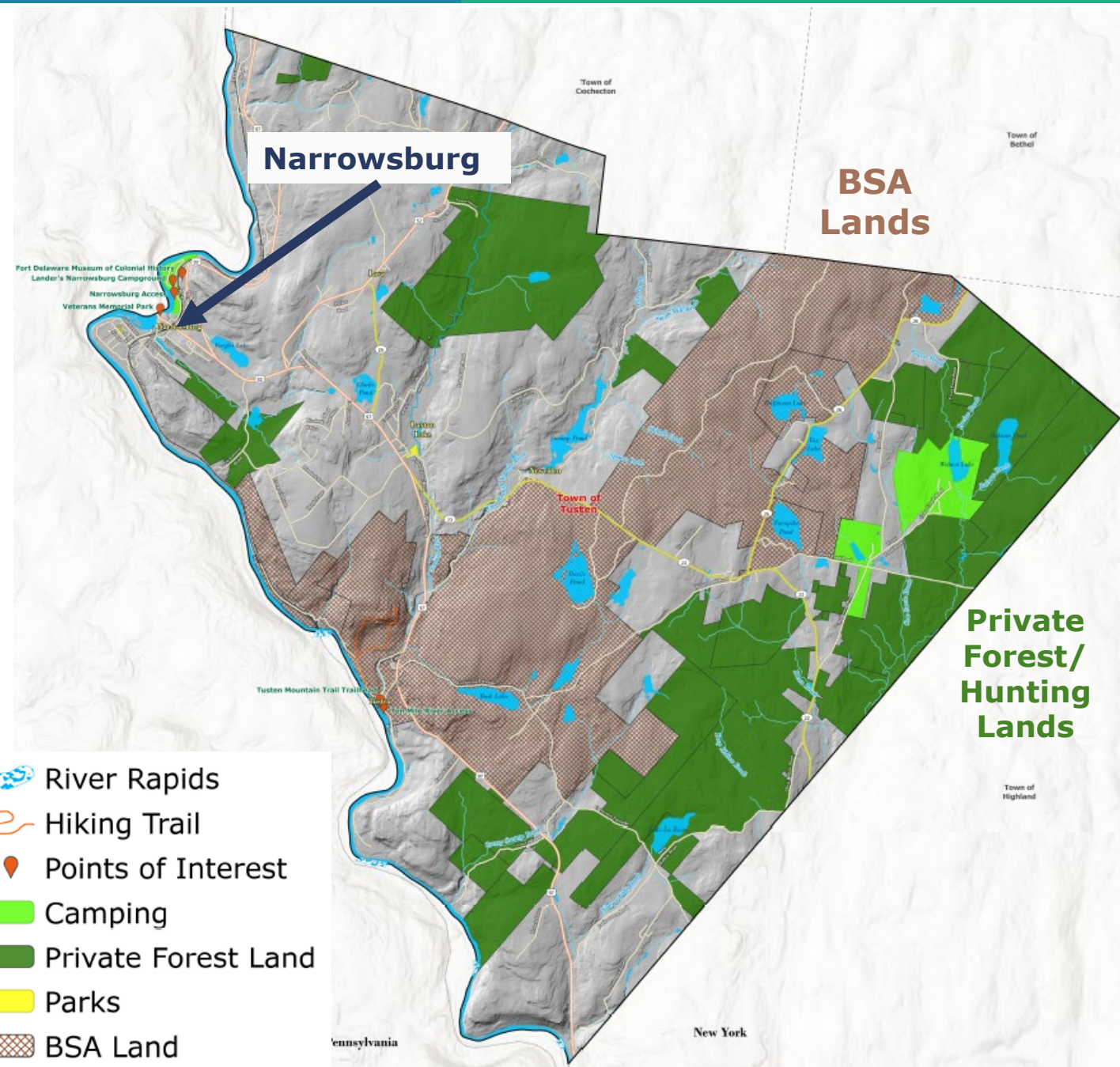
Parks, Recreation & Open Space

❖ River Access

- ❖ Narrowsburg Boat Launch (NYSDEC) at Veterans Memorial Park
- ❖ Ten Mile River (BSA)

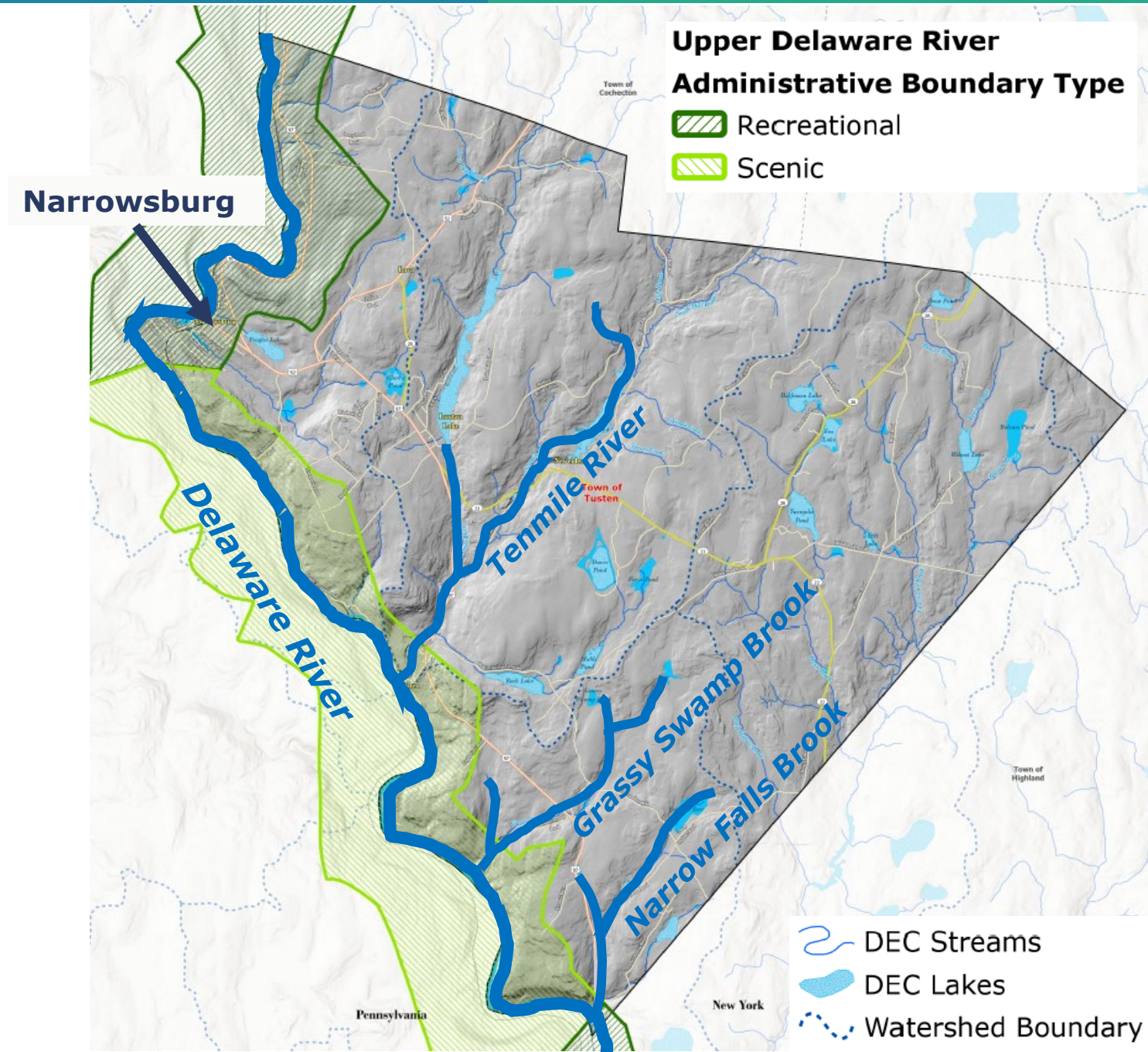
❖ Private Rafting

Existing Land Use	Land Area (Acres)	Land Area (%)
BSA Land	7799.7	24.6%
Private Forest Land	7742.2	24.4%
Camping	559.5	1.76%
Parks	7.3	0.02%
TOTAL	16108.7	50.8%



Delaware River & Key Waterways

- ❖ Upper Delaware River – 27 Miles
 - ❖ Recreational
 - ❖ Scenic
- ❖ Key Waterways
 - ❖ Delaware River
 - ❖ Ten Mile River
 - ❖ Grassy Swamp Brook
 - ❖ Narrow Falls Brook
 - ❖ Beaver Brook



Wetlands

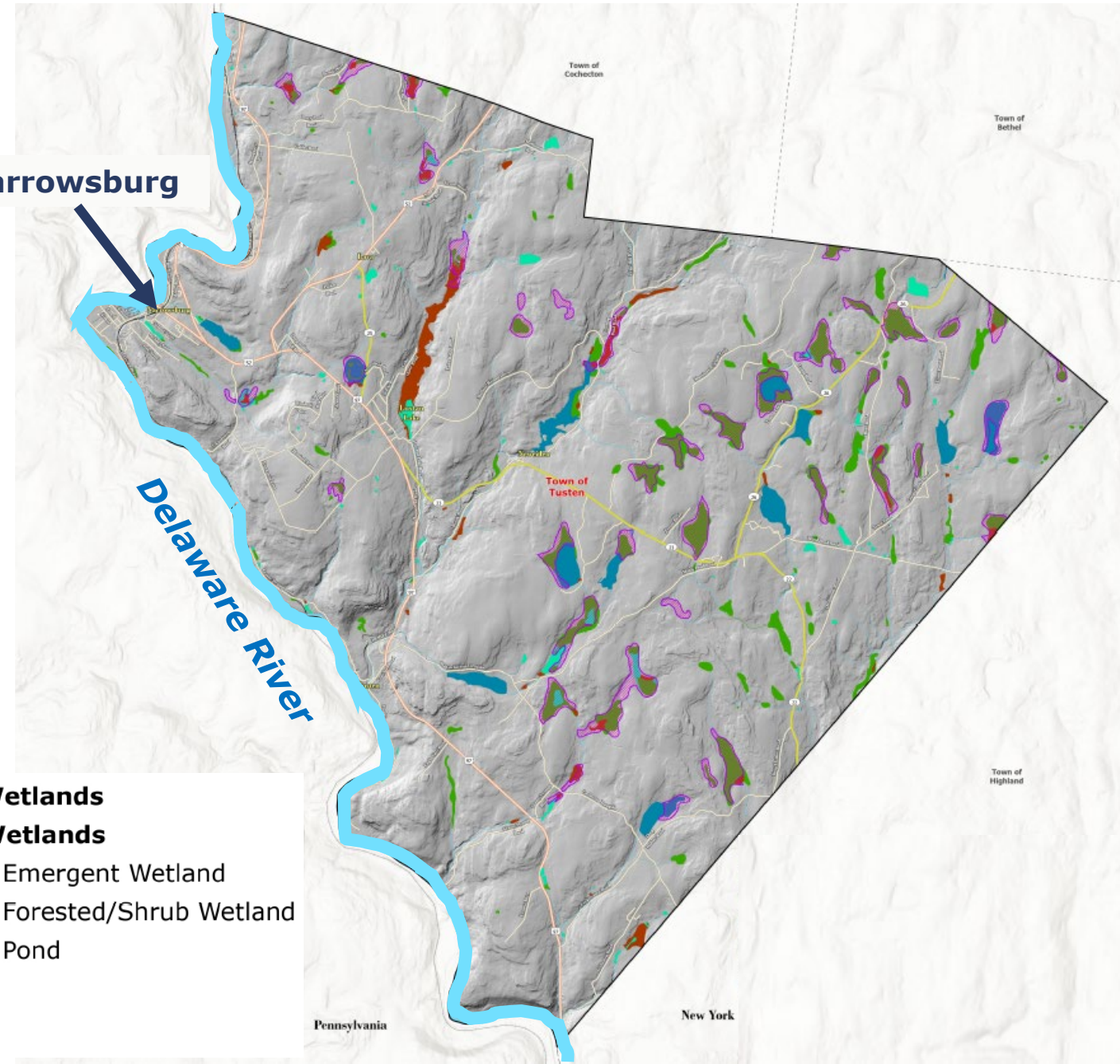
❖ State Wetlands








- ❖ Regulated by NYSDEC
- ❖ Freshwater Wetlands
- ❖ 1,170 Acres ~ **4%**

❖ Federal Wetlands

- ❖ Satellite derived
- ❖ Rivers, ponds, freshwater wetlands
- ❖ 2,493 Acres ~ **8%**

Narrowsburg

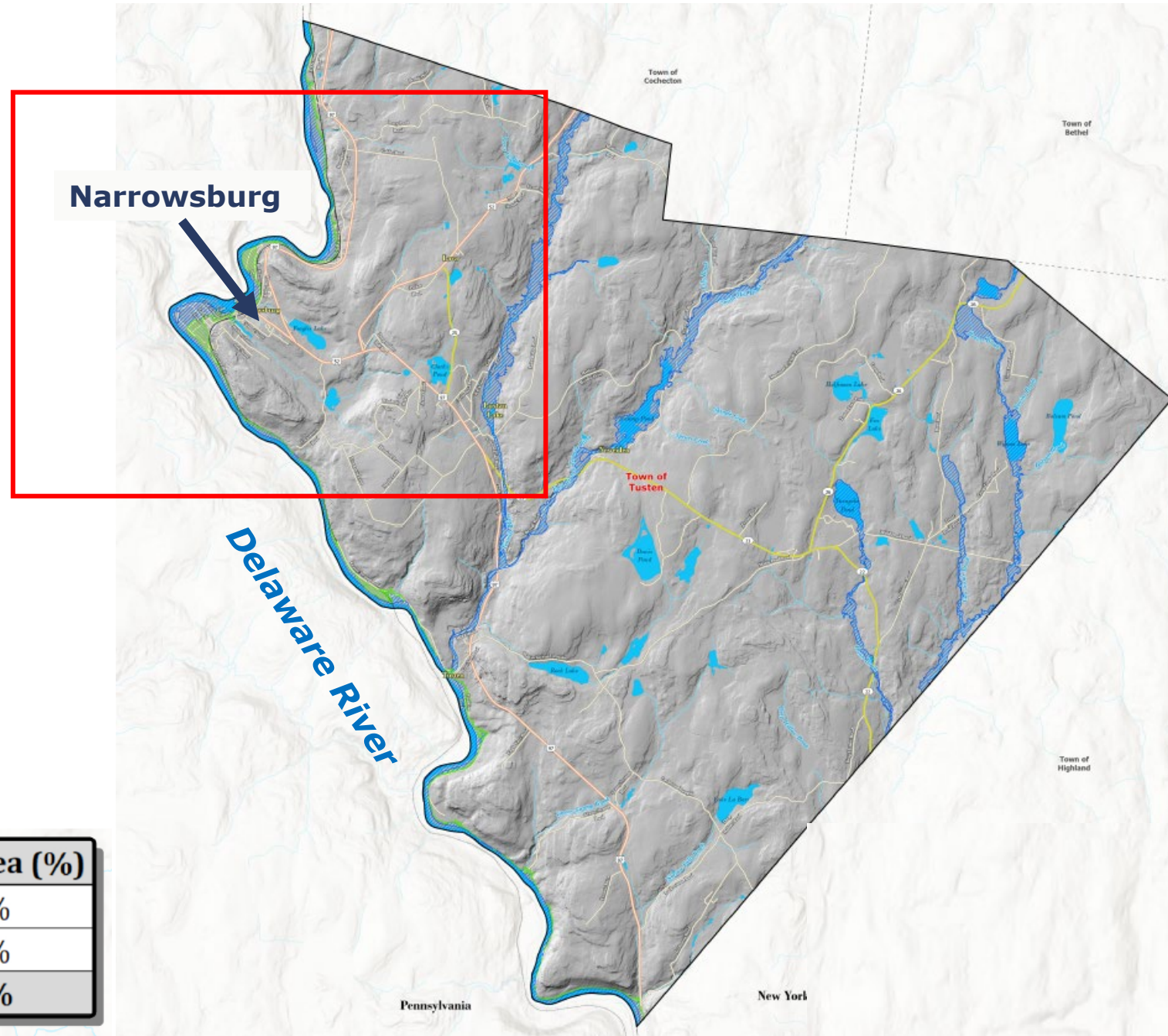


-  **NYSDEC Wetlands**
-  **NWI Federal Wetlands**
-  Freshwater Emergent Wetland
-  Freshwater Forested/Shrub Wetland
-  Freshwater Pond
-  Lake
-  Riverine

NWI Federal Wetlands	Land Area (Acres)	Land Area (%)
Freshwater Forested/Shrub Wetland	992.8	3.1%
Riverine	584.7	1.8%
Lake	451.7	1.4%
Freshwater Emergent Wetland	271.4	0.9%
Freshwater Pond	192.0	0.6%
TOTAL (Federal)	2492.6	7.9%
NYSDEC Wetlands	1168.7	3.7%

Flood Zones

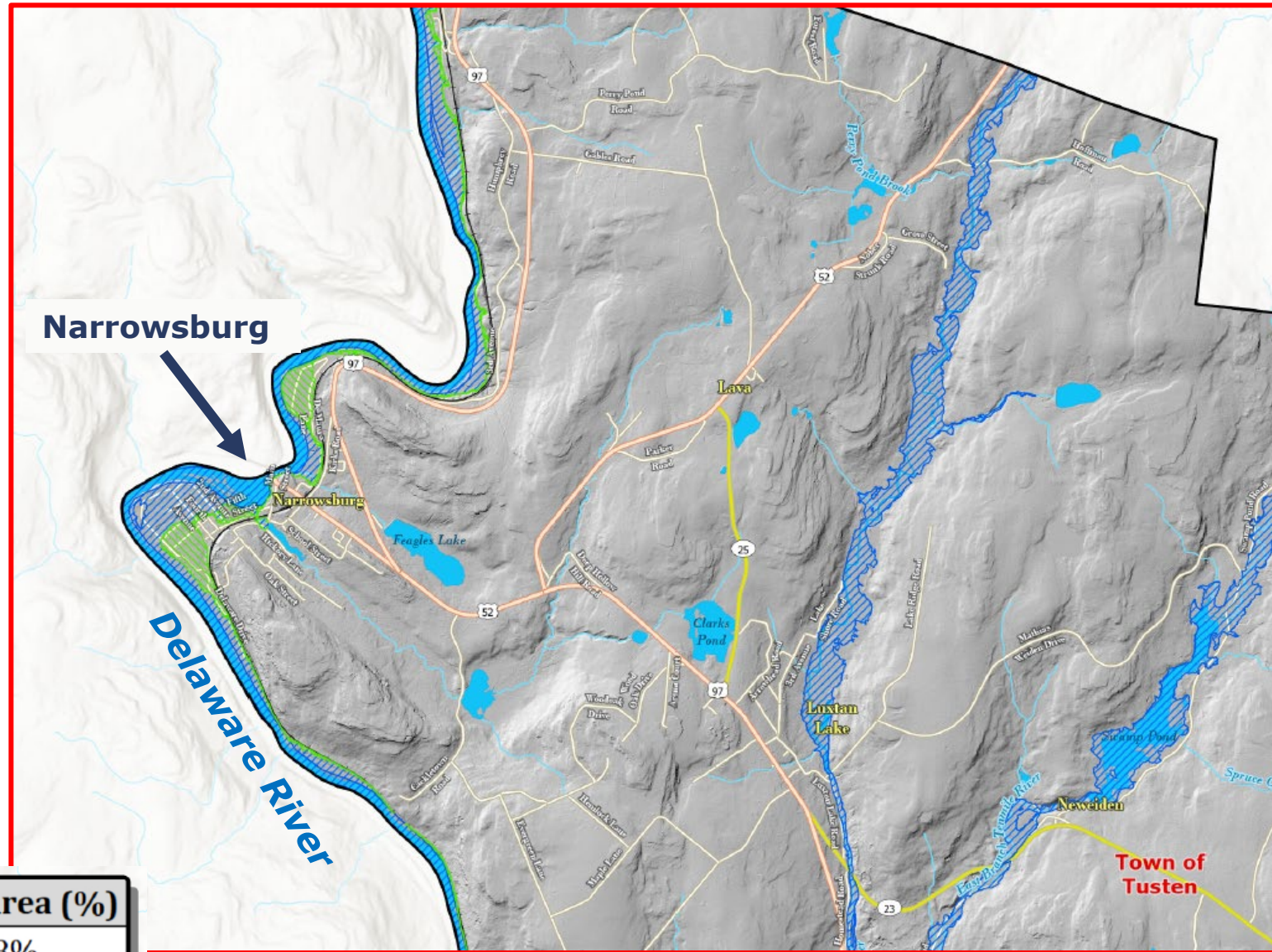
- ❖ **Primarily along:**
 - ❖ Delaware River
 - ❖ Tenmile River
- ❖ **100 Year** – A 1% chance or greater of being flooded in a year
- ❖ **500 Year** – A 0.2% chance or greater of being flooded in a year



Tusten Flood Hazard	Flood Area (Acres)	Flood Area (%)
100 - Year Flood Zone	1522.2	4.8%
500 - Year Flood Zone	111.0	0.4%
TOTAL	1633.2	5.2%

Flood Zones

- ❖ **Primarily along:**
 - ❖ Delaware River
 - ❖ Tenmile River
- ❖ **100 Year** – A 1% chance or greater of being flooded in a year
- ❖ **500 Year** – A 0.2% chance or greater of being flooded in a year



Tusten Flood Hazard	Flood Area (Acres)	Flood Area (%)
100 - Year Flood Zone	1522.2	4.8%
500 - Year Flood Zone	111.0	0.4%
TOTAL	1633.2	5.2%

Additional Mapping

- ❖ **Bedrock and Surficial Geology**
- ❖ **Soils**
- ❖ **Agricultural Resources**
- ❖ **Habitats and Biodiversity**
- ❖ **Drinking Water Resources**
- ❖ **Regulated Facilities**
- ❖ **Cultural and Historic Sites**

PUBLIC ENGAGEMENT



Town of
Tusten
an Upper Delaware River Community





Public Engagement

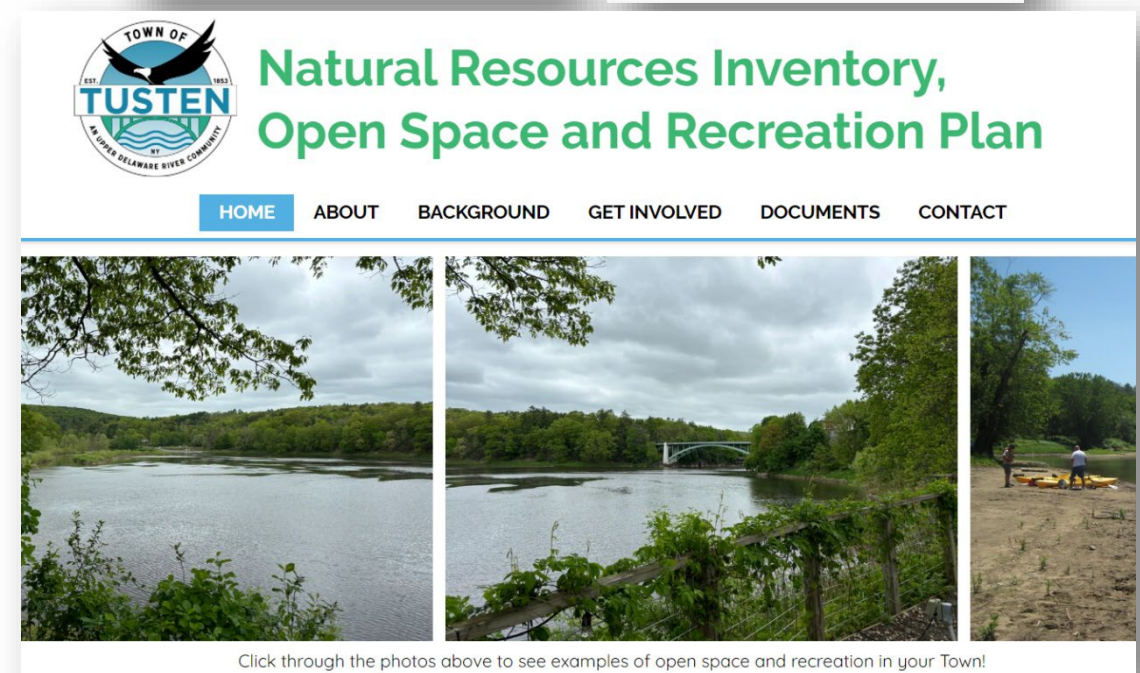
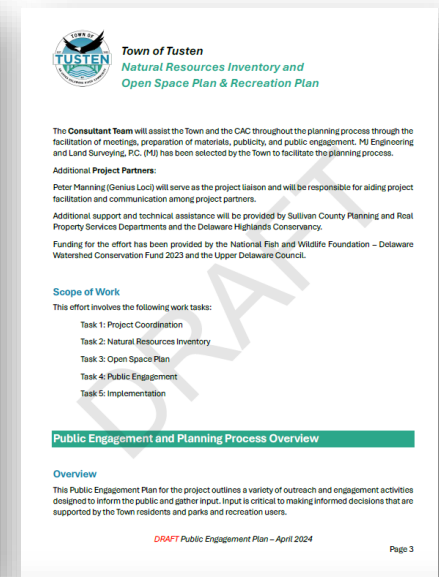
- ❖ **Public Engagement Plan**
- ❖ **Project Website**
- ❖ **Public Workshop #1**
- ❖ **Community Visioning Survey**

Public Engagement

❖ Public Engagement Plan

❖ Project Website – [Now Live!](#)

- ❖ Interactive, project focused
- ❖ Informs public of background, process and engagement activities
- ❖ Posting of meeting materials
- ❖ [TustenOpenSpaceRecreation.com](https://www.tustentown.com/NaturalResourcesInventoryOpenSpaceRecreation)



Town of
Tusten
an Upper Delaware River Community

Public Engagement

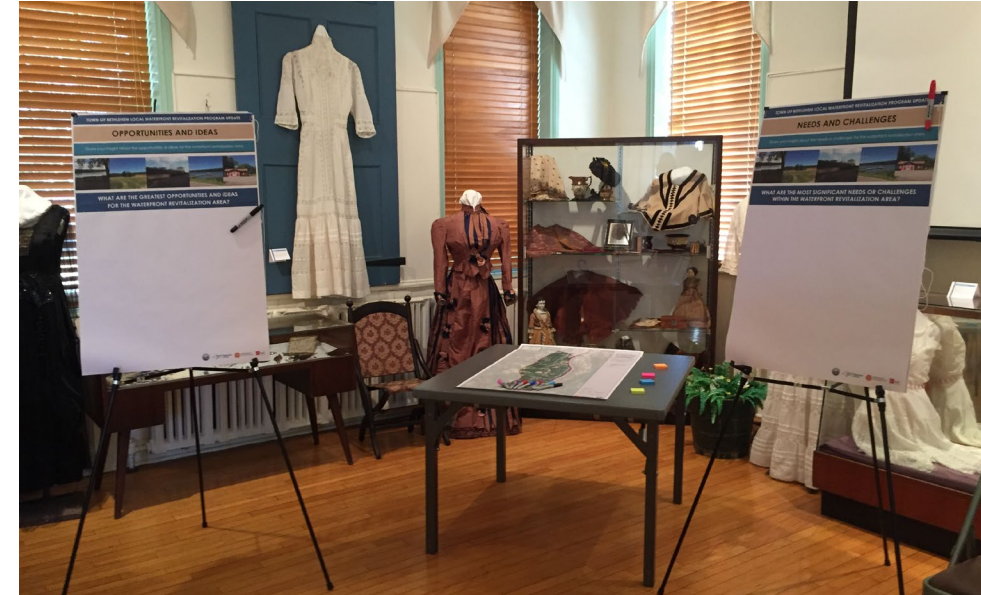
- ❖ **Public Workshop #1**
- ❖ In Person Open House
- ❖ Town Hall
- ❖ July/August 2024
- ❖ Present Draft NRI Mapping
- ❖ Interactive Mapping Exercise



Public Engagement

❖ Public Workshop #1 (cont'd)

- ❖ Open Space Visioning
- ❖ Question examples:
 - ❖ What resources are most important to you?
 - ❖ What activities do you participate in and where?
- ❖ Launch the Community Visioning Survey



Public Engagement

- ❖ **Community Visioning Survey**
- ❖ Targeted questions to help identify Open Space and Recreation Plan vision and goals
- ❖ Online and hard copy formats
- ❖ Publicity – website, social media, Committee



Town of
Tusten
an Upper Delaware River Community

NEXT STEPS



Town of
Tusten
an Upper Delaware River Community



Next Steps

- ❖ Additional NRI Mapping
- ❖ Public Open House #1 & Publicity
- ❖ Community Visioning Survey
- ❖ Next Meeting –
August 15, 2024 at 1:00 PM



Thank you

